



an EnerSys® company

# Cordex® CXC HP Controller SNMP Integrator Guide

**User Guide ID:** 0350099-J0

**Effective:** 02/2023



**Read this document carefully.**

Learn how to protect your equipment from damage and fully understand its functions.



## NOTICE

For the latest version of software, firmware, and product documentation, visit the Alpha® website, [www.alpha.com](http://www.alpha.com) or [www.alpha.ca](http://www.alpha.ca).



## NOTICE

Photographs contained in this document are for illustrative purposes only. These photographs may not match your installation.



## NOTICE

Operator is cautioned to review the drawings and illustrations contained in this document before proceeding. If there are questions regarding the safe operation of this powering system, contact Alpha Technologies Ltd. or your nearest Cordex® power system representative.



## NOTICE

Alpha Technologies Ltd. shall not be held liable for any damage or injury involving its enclosures, power supplies, generators, batteries, or other hardware if used or operated in any manner or subject to any condition inconsistent with its intended purpose, or if installed or operated in an unapproved manner, or improperly maintained.

## Copyright notice

© 2023 Alpha Technologies Ltd., an EnerSys company. All Rights Reserved. Trademarks and logos are the property of EnerSys and its affiliates. Subject to revisions without prior notice. E.&O.E.

No part of this documentation shall be reproduced, stored in a retrieval system, translated, transcribed, or transmitted in any form or by any means manual, electric, electronic, electromechanical, chemical, optical, or otherwise without prior explicit written permission from Alpha Technologies Ltd.

This document, the software it describes, and the information and know-how they contain constitute the proprietary, confidential and valuable trade secret information of Alpha, and may not be used for any unauthorized purpose, or disclosed to others without the prior written permission of Alpha.

The material contained in this document is for information only and is subject to change without notice. While reasonable efforts have been made in the preparation of this document to assure its accuracy, Alpha assumes no liability resulting from errors or omissions in this document, or from the use of the information contained herein. Alpha reserves the right to make changes in the product design without reservation and without notification to its users.

# Contents

List of Figures.....	3
List of Tables.....	4
<b>1. Safety.....</b>	<b>9</b>
<b>2. Introduction.....</b>	<b>10</b>
2.1. Purpose and audience.....	10
2.2. Knowledge and permissions.....	10
<b>3. Using SNMP for the Cordex® CXC HP controller.....</b>	<b>11</b>
3.1. Setting up the SNMP agent.....	11
3.2. Configuring the SNMP agent.....	11
3.3. Configuring an SNMP destination.....	12
3.4. Configure an SNMP component reference.....	14
3.4.1. Re-number component references by name.....	15
3.5. Discovery.....	15
3.6. Notifications.....	16
3.7. Performing a MIB WALK.....	17
3.8. Downloading controller MIB files.....	18
<b>4. SNMP reference for the Cordex® CXC HP controller.....</b>	<b>22</b>
4.1. Alarms reference.....	22
4.2. Alarm mapping example.....	34
4.3. Alarm history and alarm auditing.....	36
4.4. Alarms configuration.....	36
4.5. Cordex® CXC HP controller MIB files.....	38
4.6. SNMP MIB reference.....	42
4.6.1. Controller information.....	45
4.6.2. Using the Alpha® Resource MIB.....	52
4.6.3. Published SNMP fields.....	69
4.6.4. Published SNMP Get/Set fields.....	110
4.7. Differences between SNMP versions.....	136
<b>5. Glossary.....</b>	<b>138</b>

# List of Figures

Figure 3-1 SNMP agent configured for an SNMPv3 NMS.....	12
Figure 3-2 Notification destination table.....	14
Figure 3-3 Example of discovery using the MG-SOFT V10 SNMP tool.....	15
Figure 3-4 Sample data for a controller SNMP notification.....	16
Figure 3-5 Example of a subtree WALK on the MIB-2 system node.....	18
Figure 3-6 SNMP configuration page.....	19
Figure 3-7 Software/Firmware Downloads page.....	20
Figure 4-1 Example Controller SNMP notification.....	22
Figure 4-2 Notification - Alarm active.....	35
Figure 4-3 Notification - Alarm clear.....	36
Figure 4-4 Table view of configuration list table for digital alarm.....	37
Figure 4-5 Table view of configuration list table for threshold alarm .....	38
Figure 4-6 Field list for SNMPv2-MIB.....	42
Figure 4-7 Table from Alpha® Resource MIB.....	43
Figure 4-8 Tables from Alpha® Resource MIB.....	44
Figure 4-9 Tables from Alpha® Resource MIB.....	44
Figure 4-10 Table view for the ComponentTable.....	58
Figure 4-11 Table view for the DataListTable.....	59
Figure 4-12 Table view for the DataTable.....	59
Figure 4-13 Sample query of system voltage.....	60
Figure 4-14 Table view for the ComponentTable.....	61
Figure 4-15 Table view for the ConfigurationListTable.....	62
Figure 4-16 Table view for the configuration table.....	63
Figure 4-17 Sample set of float voltage.....	63
Figure 4-18 Table view for the ComponentListTable.....	64
Figure 4-19 Table view for the ConfigurationListTable.....	64
Figure 4-20 Table view for the configuration table.....	65
Figure 4-21 Sample set of rectifier assignment rule.....	65
Figure 4-22 Table view for the ConfigurationChoiceList table.....	66
Figure 4-23 Example: Available alarm type list.....	67
Figure 4-24 Example: Available alarm list.....	67
Figure 4-25 Example: Active alert list.....	68

# List of Tables

Table 3-1 Example SNMP IDs after pressing the Re-number Component References by Name button....	15
Table 4-1 Alarm reference table.....	23
Table 4-2 Digital alarm configuration fields.....	37
Table 4-3 Threshold alarm configuration fields.....	37
Table 4-4 Controller information flat table.....	45
Table 4-5 The controller information full table.....	45
Table 4-6 Component list.....	53
Table 4-7 Data field type.....	56
Table 4-8 Data list.....	58
Table 4-9 Configuration field type.....	60
Table 4-10 Configuration choice list.....	66
Table 4-11 Alarm type list.....	66
Table 4-12 Configuration choice list.....	69
Table 4-13 Controller SNMP IDs (component type #1).....	70
Table 4-14 DC system SNMP IDs (component type #2).....	74
Table 4-15 Cordex® 8R/8D ADIO SNMP IDs (component type #3).....	76
Table 4-16 Cordex® CXC HP L-ADIO SNMP IDs (component type #3).....	76
Table 4-17 Cordex® CXCi HP/M1 ADIO SNMP IDs (component type #3).....	78
Table 4-18 Cordex® M1+ ADIO SNMP IDs (component type #3).....	78
Table 4-19 PSU SNMP IDs (component type #3).....	79
Table 4-20 Cordex® CXC HP HV-ADIO SNMP IDs (component type #3).....	79
Table 4-21 Smart BDFB SNMP IDs (component type #3).....	80
Table 4-22 Smart E2 SNMP IDs (component type #3).....	81
Table 4-23 FanTray SNMP IDs (component type #3).....	83
Table 4-24 ShuntMux SNMP IDs (component type #3).....	83
Table 4-25 Cordex® CXC HP 6i-ADIO SNMP IDs (component type #3).....	83
Table 4-26 FlexAir® controller SNMP IDs (component type #3).....	84
Table 4-27 Smart bypass SNMP IDs (component type #3).....	84
Table 4-28 Rectifier SNMP IDs (component type #4).....	85
Table 4-29 Converter SNMP IDs (component type #5).....	86
Table 4-30 Battery system SNMP IDs (component type #10).....	86
Table 4-31 Shunt SNMP IDs (component type #13).....	87

Table 4-32 SNMP destination SNMP IDs (component type #14).....	87
Table 4-33 CAN bus SNMP IDs (component type #15).....	88
Table 4-34 Converter system SNMP IDs (component type #16).....	88
Table 4-35 Inverter system SNMP IDs (component type #19).....	88
Table 4-36 Bypass switch SNMP IDs (component type #20).....	93
Table 4-37 Delay timer SNMP IDs (component type #21).....	93
Table 4-38 Interval timer SNMP IDs (component type #22).....	94
Table 4-39 Up counter SNMP IDs (component type #23).....	94
Table 4-40 Down counter SNMP IDs (component type #24).....	94
Table 4-41 Custom data SNMP IDs (component type #25).....	94
Table 4-42 CT SNMP IDs (component type #26).....	95
Table 4-43 Breaker or fuse SNMP IDs (component type #27).....	95
Table 4-44 Line power system SNMP IDs (component type #31).....	95
Table 4-45 Line power system module SNMP IDs (component type #32).....	96
Table 4-46 Line power load SNMP IDs (component type #33).....	96
Table 4-47 Distribution system SNMP IDs (component type #34).....	96
Table 4-48 Distribution panel SNMP IDs (component type #35).....	97
Table 4-49 Distribution subsystem SNMP IDs (component type #36).....	97
Table 4-50 Scheduled action SNMP IDs (component type #40).....	97
Table 4-51 FXM HP system SNMP IDs (component type #41).....	98
Table 4-52 Change relay SNMP IDs (component type #43).....	98
Table 4-53 Change field SNMP IDs (component type #44).....	99
Table 4-54 General purpose transducer SNMP IDs (component type #48).....	99
Table 4-55 Change field to variable SNMP IDs (component type #49).....	99
Table 4-56 Battery string SNMP IDs (component type #50).....	99
Table 4-57 DC source system SNMP IDs (component type #52).....	100
Table 4-58 Basic DC source SNMP IDs (component type #53).....	100
Table 4-59 Legacy DC generator SNMP IDs (component type #53).....	100
Table 4-60 AC source system SNMP IDs (component type #56).....	100
Table 4-61 AC source SNMP IDs (component type #57).....	100
Table 4-62 Legacy AC generator SNMP IDs (component type #57).....	101
Table 4-63 Bypass switch XMBS SNMP IDs (component type #62).....	101
Table 4-64 FXM HP ADIO SNMP IDs (component type #63).....	101
Table 4-65 Thermal system SNMP IDs (component type #67).....	101

Table 4-66 Hyperboost Converter SNMP IDs (component type #69).....	102
Table 4-67 Hyperboost System SNMP IDs (component type #70).....	102
Table 4-68 AC generator SNMP IDs (component type #74).....	104
Table 4-69 DC generator SNMP IDs (component type #75).....	104
Table 4-70 Generator start equation SNMP IDs (component type #76).....	105
Table 4-71 Generator stop equation SNMP IDs (component type #77).....	105
Table 4-72 Generator start condition; Generator stop condition SNMP IDs (component type #78).....	106
Table 4-73 User SNMP IDs (component type #79).....	106
Table 4-74 Polarium protocol bridge SNMP IDs (component type #94).....	106
Table 4-75 Polarium battery module SNMP IDs (component type #95).....	107
Table 4-76 Polarium battery system SNMP IDs (component type #96).....	107
Table 4-77 Matrix C16 Module SNMP IDs (component type #97).....	108
Table 4-78 Controller SNMP IDs (component type #1).....	110
Table 4-79 DC system SNMP IDs (component type #2).....	113
Table 4-80 ADIO SNMP IDs (component type #3).....	114
Table 4-81 FlexAir® controller SNMP IDs (component type #3).....	114
Table 4-82 Rectifier SNMP IDs (component type #4).....	114
Table 4-83 T2S SNMP IDs (component type #8).....	114
Table 4-84 Battery system SNMP IDs (component type #10).....	114
Table 4-85 Disconnect SNMP IDs (component type #11).....	116
Table 4-86 Load SNMP IDs (component type #12).....	116
Table 4-87 Shunt SNMP IDs (component type #13).....	116
Table 4-88 SNMP destination SNMP IDs (component type #14).....	117
Table 4-89 CAN bus SNMP IDs (component type #15).....	117
Table 4-90 Converter system SNMP IDs (component type #16).....	117
Table 4-91 Digital user alarm SNMP IDs (component type #17).....	118
Table 4-92 Threshold user alarm SNMP IDs (component type #18).....	118
Table 4-93 Inverter system SNMP IDs (component type #19).....	118
Table 4-94 Bypass switch SNMP IDs (component type #20).....	118
Table 4-95 Delay timer SNMP IDs (component type #21).....	119
Table 4-96 Interval timer SNMP IDs (component type #22).....	119
Table 4-97 Up counter SNMP IDs (component type #23).....	119
Table 4-98 Down counter SNMP IDs (component type #24).....	119
Table 4-99 Custom data SNMP IDs (component type #25).....	120

Table 4-100 CT SNMP IDs (component type #26).....	120
Table 4-101 Breaker fuse SNMP IDs (component type #27).....	121
Table 4-102 Email destination SNMP IDs (component type #29).....	121
Table 4-103 Auxiliary system SNMP IDs (component type #30).....	121
Table 4-104 Line power system SNMP IDs (component type #31).....	121
Table 4-105 Line power load SNMP IDs (component type #33).....	122
Table 4-106 Distribution system SNMP IDs (component type #34).....	122
Table 4-107 Distribution panel SNMP IDs (component type #35).....	122
Table 4-108 Distribution subsystem SNMP IDs (component type #36).....	123
Table 4-109 Reference load SNMP IDs (component type #37).....	123
Table 4-110 Scheduled action SNMP IDs (component type #40).....	123
Table 4-111 FXM HP system SNMP IDs (component type #41).....	123
Table 4-112 Disconnect with time of day SNMP IDs (component type #42).....	125
Table 4-113 Change relay SNMP IDs (component type #43).....	125
Table 4-114 Change field SNMP IDs (component type #44).....	125
Table 4-115 General purpose transducer SNMP IDs (component type #48).....	125
Table 4-116 Change field to variable SNMP IDs (component type #49).....	126
Table 4-117 Battery string SNMP IDs (component type #50).....	126
Table 4-118 Timing relay SNMP IDs (component type #51).....	126
Table 4-119 DC source system SNMP IDs (component type #52).....	126
Table 4-120 Basic DC source SNMP IDs (component type #53).....	127
Table 4-121 Legacy DC generator SNMP IDs (component type #53).....	127
Table 4-122 Data subscription SNMP IDs (component type #54).....	128
Table 4-123 Generic disconnect SNMP IDs (component type #55).....	128
Table 4-124 AC source system SNMP IDs (component type #56).....	129
Table 4-125 AC source SNMP IDs (component type #57).....	129
Table 4-126 Legacy AC generator SNMP IDs (component type #57).....	130
Table 4-127 Scheduled time span SNMP IDs (component type #61).....	131
Table 4-128 Bypass switch XMBS SNMP IDs (component type #62).....	131
Table 4-129 Thermal system SNMP IDs (component type #67).....	131
Table 4-130 Battery disconnect with latching contactor SNMP IDs (component type #68).....	132
Table 4-131 Hyperboost Converter SNMP IDs (component type #69).....	132
Table 4-132 Hyperboost System SNMP IDs (component type #70).....	132
Table 4-133 AC generator SNMP IDs (component type #74).....	133




Table 4-134 DC generator SNMP IDs (component type #75).....	133
Table 4-135 Generator start equation SNMP IDs (component type #76).....	133
Table 4-136 Generator stop equation SNMP IDs (component type #77).....	133
Table 4-137 Generator start condition; Generator stop condition SNMP IDs (component type #78).....	134
Table 4-138 Polarium protocol bridge SNMP IDs (component type #94).....	134
Table 4-139 Polarium battery module SNMP IDs (component type #95).....	134
Table 4-140 Polarium battery system SNMP IDs (component type #96).....	134
Table 4-141 Matrix C16 Module SNMP IDs (component type #97).....	134
Table 4-142 Syslog Destination SNMP IDs (component type #98).....	135
Table 4-143 SNMPv1 traps versus SNMPv2 notification.....	137

# 1. Safety


**SAVE THESE INSTRUCTIONS:** This document contains important safety instructions that must be followed during the installation, servicing, and maintenance of the product. Keep it in a safe place. Review the drawings and illustrations contained in this document before proceeding. If there are any questions regarding the safe installation or operation of this product, contact Alpha Technologies Ltd. or the nearest Alpha® power system representative.


## Safety wording and symbols

To reduce the risk of injury or death, and to ensure the continued safe operation of this product, the following symbols have been placed throughout this document. Where these symbols appear, use extra care and attention.


 **Attention:** *The use of attention indicates specific regulatory or code requirements that may affect the placement of equipment or installation procedures.*

 **Notice:** *Notices provide additional information to help complete a specific task or procedure.*


 **Important:** *Follow the prescribed procedures to avoid equipment damage or service interruption.*

 **CAUTION:** *Cautions indicate safety information intended to PREVENT DAMAGE to material or equipment.*

 **Warning:** *Warnings present safety information to PREVENT INJURY OR DEATH to personnel.*

 **CAUTION:** *HOT! The use of Hot presents safety information to PREVENT BURNS to the technician or user*

## General warning and cautions

 **Warning:** *You must read and understand the following warnings before installing the system and its components. Failure to do so could result in personal injury or death.*

- Read and follow all instructions included in this manual.
- Only trained personnel are qualified to install or replace this equipment and its components.
- Use proper lifting techniques whenever handling equipment, parts, or batteries.

## 2. Introduction

The purpose of this document is to provide simple and complete information on how to use Cordex® high performance (CXC HP) system controller and software, along with Simple Network Management Protocol (SNMP). This guide contains information on setup, configuration, and operation of SNMP using the controller.

### 2.1. Purpose and audience

The audience for this document are engineers, technicians, IT professionals, and network operation personnel who are tasked with remote monitoring of the power system using SNMP. They should be well versed in SNMP as well as the network management, fleet management, remote monitoring, or network operations center software and tools that will be used to monitor the controller.

### 2.2. Knowledge and permissions

We assume you have a good working knowledge of, and access to, the following:

- SNMP monitoring software and tools
- Network and port monitoring tools like Firebug and Wireshark
- Ethernet cables and TCP/IP settings needed to connect your computer to the controller
- Current version of Google Chrome, Mozilla Firefox, Microsoft Internet Explorer, Microsoft Edge, or Apple Safari
- Power system that the controller currently controls
- Controller admin password and the appropriate level of permissions

## 3. Using SNMP for the Cordex® CXC HP controller

### 3.1. Setting up the SNMP agent

SNMP consists of three key components:

- Managed devices
- Agents
- Network management system (NMS)

A managed device is a node that has an SNMP agent. An agent is a software component that provides device information using the SNMP protocol. An NMS collects data from SNMP agents, and then uses that data to monitor and manage the associated devices.

To set up the SNMP agent on the controller, you need to know how the NMS accessing the controller is set up.

There are three main things you need to know:

- What version of SNMP does the NMS use: v1, v2 or v3?
- Does the NMS use notifications or informs?
- What security settings the NMS is using?

### 3.2. Configuring the SNMP agent

To configure the SNMP agent:

1. From the main dashboard go to **Controller > Communication > SNMP**.
2. From the **Configuration** table, ensure the **SNMP Agent** is **Enabled**.

The device must be reset to complete the enable and disable **SNMP Agent** configuration.

If **SNMP Agent** is **Discovery Only**, the controller will be available to be discovered, but nothing else. OIDs under controllerInfo (OID 1.3.6.1.4.1.7309.5.1) and MIB-2 system (OID 1.3.6.1.4.1.7309.5.1) can be queried, as these are commonly used to discover and identify devices.

3. If the SNMP client is allowed to set the configuration objects in the **Configuration** table (OID 1.3.6.1.4.1.7309.5.2.5.2), set **SNMP Get and Set** to **Get And Set Allowed**.
4. Enter the Read or Write Communities SNMP clients will be querying with in the **Read Communities** and **Write Communities** tables. Read and Write Communities are used when using SNMPv2.

If a query is made with a read community that does not match any of the configured **Read Communities**, that query will not get a response.

5. From the **SNMPv3 Configuration** table

- For SNMPv1, set **SNMPv3 Security** to **Disabled**
- For SNMPv2, set **SNMPv3 Security** to **Disabled**
- For SNMPv3, set **SNMPv3 Security** to **Enabled**

6. Optional: If **SNMPv3 Security** is **Enabled**, and the **Security Name** is set to "admin", the password of the administrator account is the encryption key to secure the data transfer. This is to provide backward compatibility with pre-version 7.20 application software. In order to use a different password from the administrator account, a new **Security Name** must be used. To customize the encryption passwords, set the **Security Name** and select the buttons to **Set Authentication Password** and **Set Privacy Password**. Also ensure the Encryption Protocols match what the NMS is using. **SNMPv3** supports MD5 or SHA for Authentication Encryption Protocol and DES or AES-128 for Privacy Encryption Protocol.

The webpage should look similar to the following figure.

**Figure 3-1** SNMP agent configured for an SNMPv3 NMS

Name	Value	
SNMP Agent	Enabled	<a href="#">EDIT</a>
SNMP Get and Set	Only Get Allowed	<a href="#">EDIT</a>
Synchronize Alarm Parameters	Disabled	<a href="#">EDIT</a>
UPS MIB System	---	<a href="#">EDIT</a>

Name	Value	
SNMPv3 Security	Enabled	<a href="#">EDIT</a>
Security Name	admin	<a href="#">EDIT</a>
Encryption Protocol Credentials	Use administrator account password	<a href="#">VIEW</a>
Authentication Encryption Protocol	MD5	<a href="#">EDIT</a>
Authentication Protocol Password	---	<a href="#">VIEW</a>
Privacy Encryption Protocol	DES	<a href="#">EDIT</a>
Privacy Protocol Password	---	<a href="#">VIEW</a>

### 3.3. Configuring an SNMP destination

To configure an SNMP destination:

1. From the main dashboard go to **Controller > Communication > SNMP > SNMP Destinations** table.
2. On the **Notification Destination** line, select the **GO TO** button.
3. From the **Notification Destination** table, ensure the following:

- The **Destination** is **Enabled**
  - The **IP Address** is set to an appropriate machine name, IPv4 or IPv6 address.
  - The **Community** string is set to the value used by the NMS for SNMPv2.
  - The **Port** is set to the port used by the NMS to receive notifications.
4. Ensure that the **Notification Timeout** is set to:
- For Traps and Notifications, set the **Notification Timeout** to 0 seconds.
  - For SNMPv2 and SNMPv3 Informs, set the **Notification Timeout** to 5 or more seconds.



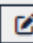


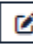


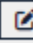


**Notice:** *With SNMP Acknowledged Notifications, the SNMP Agent waits for an acknowledgment (ACK) from the NMS for every notification it sends. If the agent does not get an ACK within the timeout period, the SNMP agent will retransmit the notification.*

5. Ensure that the **Notification Retries** is set to a reasonable number (for example, between 3 to 5).

Retries only apply to inform notifications that have a **Notification Timeout** value. The number of retries should be small as they are only meant to make the delivery of notifications more reliable.

Once complete the **Notification Destination** table should look similar to the following figure.

**Figure 3-2** Notification destination table

SNMP Destination/1		
Name ↕	Value ↕	
Name	---	 EDIT
Description	---	 EDIT
Destination	Enabled	 EDIT
IP Address	10.1.24.200	 EDIT
Community	public	 EDIT
Port	162	 EDIT
Notification Timeout	0 s	 EDIT
Notification Retries	3	 EDIT
Notification Type	Unacknowledged	 VIEW

### 3.4. Configure an SNMP component reference

Each component in the controller has a specific component reference number (SNMP ID) assigned the first time it is created. Each controller may have a complex structure including, multiple inventory of the same type or have multiple inventory of different types such as inverter, converter, or DC systems.

For more complex controllers containing multiple inventory of the same type it may be helpful to change the component reference number so that other controllers with the same cloned configuration will have the same SNMP component list structure. This helps especially when advanced scripting is used on the NMS.

It is possible to change SNMP IDs for systems, ADIOs, and custom data. It is important to ensure any modified IDs do not conflict with each other. To configure these go to **Controller > Communication > SNMP**. The component reference numbers for each component are listed in the respective **SNMP Component Reference** table. Before changing any of these IDs ensure that the SNMP agent is enabled. After changing an ID, it may take several minutes for the change to take effect as the controller rebuilds the internal SNMP database.

### 3.4.1. Re-number component references by name

The **Re-number Component References by Name** button (in each **SNMP Component Reference** table) can be used as a quick solution to ensure controllers with the same cloned configuration have matching reference numbers for a given component. For each component of the same type in the table, SNMP IDs will be assigned consecutively according to the component name.

For example, consider a situation with two AC Source Systems (component type 56) named "My First Source" and "My Second Source", and one DC System (component type 2) named "My DC System". In this case, after pressing the **Re-number Component References by Name** button in the **System SNMP Component Reference** table, the AC source systems will have IDs 1 and 2 consecutively assigned because they are the same component type, while the DC system will have ID 1 assigned, as there are no other DC systems.

**Table 3-1** Example SNMP IDs after pressing the Re-number Component References by Name button

Component Name	Component Type	Assigned SNMP ID
My DC System	2, DC System	1
My First Source	56, AC Source System	1
My Second Source	56, AC Source System	2

## 3.5. Discovery

SNMP discovery occurs by scanning IP address ranges for SNMP enabled devices, and then searching the product identification fields for specific values. It is recommended that you use the SNMPv2-MIB sysDescr field, to identify the controller. This field's purpose is described in RFC-1213.

The sysDescr field identifies a controller as a *Power System Controller*. The following data is an example value for the sysDescr field:

```
System Controller, SW: v2.1 Dev 209, OS: v2.0, HW: S1.I1.P1, SN: 5799854652
```

**Figure 3-3** Example of discovery using the MG-SOFT V10 SNMP tool





System Name	System Address	Community	Protocol	Port	Up Time	Contact Person	System Location	System Description
unknown	10.1.24.102	public	SNMPv2c	161	1 days 00h:00m:02s.01th	unknown	unknown	Power System Controller...



**Notice:** If you can ping the controller, but are having trouble with SNMP discovery, check to ensure that the controller's SNMP agent is enabled.



 **Notice:** If sysDescr starts with “Discovery Only”, this indicates that the controller is only available for discovery, and not all information is able to be queried. For full functionality, ensure that the controller’s SNMP agent is enabled.

 **Notice:** If SNMPv3 Security is enabled, then the discovery tool must use the corresponding authentication, encryption protocols, and settings.

### 3.6. Notifications

The controller supports two notification types:

- Active alarm notification
- Cleared alarm notification

Both notifications share the same format, as defined in RFC 3877 - ALARM-MIB.

**Figure 3-4** Sample data for a controller SNMP notification

```

v alphaAlarmActiveState
  Message reception date: 11/29/2018
  Message reception time: 4:47:15.268 PM
  Time stamp: 2 days 01h:45m:19s.53th (17911953)
  Message type: Notification (Trap)
  Protocol version: SNMPv2c
  Transport: IP/UDP
  Agent
    Address: 10.1.8.34
    Port: 161
  Manager
    Address: 10.1.24.120
    Port: 162
  Community: public
  Bindings (12)
    Binding #1: sysUpTime.0 *** (TimeTicks) 2 days 01h:45m:19s.53th (17911953)
    Binding #2: snmpTrapOID.0 *** (OBJECT IDENTIFIER) alphaAlarmActiveState
    Binding #3: alarmActiveModelPointer *** (RowPointer) 1.3.6.1.2.1.118.1.1.2.1.20019
    Binding #4: alarmActiveResourceid *** (Resourceid) 1.3.6.1.4.1.7309.5.2.1.2.1.2.1
    Binding #5: alarmModelState.20019.2 *** (Unsigned32) 2
    Binding #6: alarmModelDescription.20019.2 *** (SnmpAdminString) DC System 48V : Temp Comp Voltage Warnin
    Binding #7: componentListStaticName.2.1 *** (OCTET STRING) DC System 48V/9179
    Binding #8: componentListReference.2.1 *** (Unsigned32) 1
    Binding #9: alarmSeverity *** (Integer32) 2
    Binding #10: controllerInfoName *** (OCTET STRING) Test Site 3
    Binding #11: alarmCustomDescription *** (OCTET STRING) 53.79.73.74.E8.6D.65.20.43.43.20.34.38.56.20.3A.20.54.6!
    Binding #12: alarmAdditionalInformation *** (OCTET STRING) ::
  
```

The varbind list includes the following:

- **sysUpTime**: Time ticks in tenth of a second since bootup.
- **snmpTrapOID**: Object ID of the notification.
- **alarmActiveModelPointer**: Reference to the conceptual row in the **AlarmModel** table defining the alarm.
- **alarmActiveResourceId**: Reference to the conceptual row indicating the source of the alarm.
- **alarmModelState**: Text word indicating the severity of the alarm.
- **alarmModelDescription**: Verbose description of the alarm.
- **componentListStaticName**: Text name of the source of the alarm.
- **componentListReference**: Numeric ID assigned to the source of the alarm.
- **alarmSeverity**: Numeric ID that is user defined to support custom filtering and sorting.



**Notice:** *alarmSeverity* is mapped to **Parameter 1** in the controller alarm definitions. This type of generic name is used for alarm data that is needed for remote communication, but not used for local alarm processing.

- **controllerInfoName**: Text name of the controller.
- **alarmCustomDescription**: User configurable text name of the alarm.



**Notice:** *alarmCustomDescription* is mapped to **Parameter 2** in the controller alarm definitions. This type of generic name is used for alarm data that is needed for remote communication, but not used for local alarm processing.

- **alarmAdditionalInformation**: Generated content that provides additional information about some alarms. The information is provided as a text value, with each piece of information separated by two colons (::). Currently, the following information is provided:
  - The physical location of a module, in the format bay-shelf-slot-channel. This is currently only provided for line power modules.
  - Details about what caused the alarm. This is currently only provided for line power modules.
- A **Test Notification** button is available to test connectivity to the configured destinations. The test NOTIFICATION has a reduced set of data points (Varbinds) populated with a unique set of information to avoid confusion with a real NOTIFICATION. This item is not defined in any MIB as it is not intended to be interpreted by a monitoring system.

### 3.7. Performing a MIB WALK

To see information that is available once the MIB files are compiled into the NMS, you can perform a MIB WALK. A WALK through the ALPHA-RESOURCE-MIB (ARM) provides a large amount of data, that may not be very meaningful.

A more effective way to get useful data would be to use the simplified MIBs such as the ALPHA-RECTIFIER-MIB and ALPHA-CONVERTER-MIB because the information is laid out in an accessible, linear form.

Also, modern SNMP software can WALK a subset of data, based on the starting point required. If a WALK is executed on a subtree, the WALK stops once the end of that tree is reached.

**Figure 3-5** Example of a subtree WALK on the MIB-2 system node

The screenshot displays a graphical user interface for an SNMP management tool. On the left, a 'MIB tree' is shown as a hierarchical folder structure. The path highlighted is: MIB Tree > ccitt > iso > org > dod > internet > mgmt > mib-2 > system. On the right, a 'Query results' window shows the output of an SNMP WALK command. The results are as follows:

```

***** SNMP QUERY STARTED *****
1: sysDescr.0 (DisplayString) Power System Controller, SW: v2.20 Dev 418, OS: v1.02 Aux 3, HW: S2147483647.12147483647.P214748
2: sysObjectID.0 (OBJECT IDENTIFIER) 1.3.6.1.4.1.7309.5 [31.2E.33.2E.36.2E.31.2E.34.2E.31.2E.37.33.30.39.2E.35 (hex) Size = 18]
3: sysUpTime.0 (TimeTicks) 1 days 01h:47m:22s.73th (3284273)
4: sysContact.0 (DisplayString) unknown [75.6E.6B.6E.6F.77.6E (hex)]
5: sysName.0 (DisplayString) unknown [75.6E.6B.6E.6F.77.6E (hex)]
6: sysLocation.0 (DisplayString) unknown [75.6E.6B.6E.6F.77.6E (hex)]
7: sysServices.0 (INTEGER) 0
8: [Loaded: SNMPV2-PARTY-MIB] sysORLastChange.0 (TimeStamp) 0
Start time : 24/06/2015 1:06:35 PM
End time : 24/06/2015 1:06:39 PM
Duration : 3s.826ms
***** SNMP QUERY FINISHED *****

```

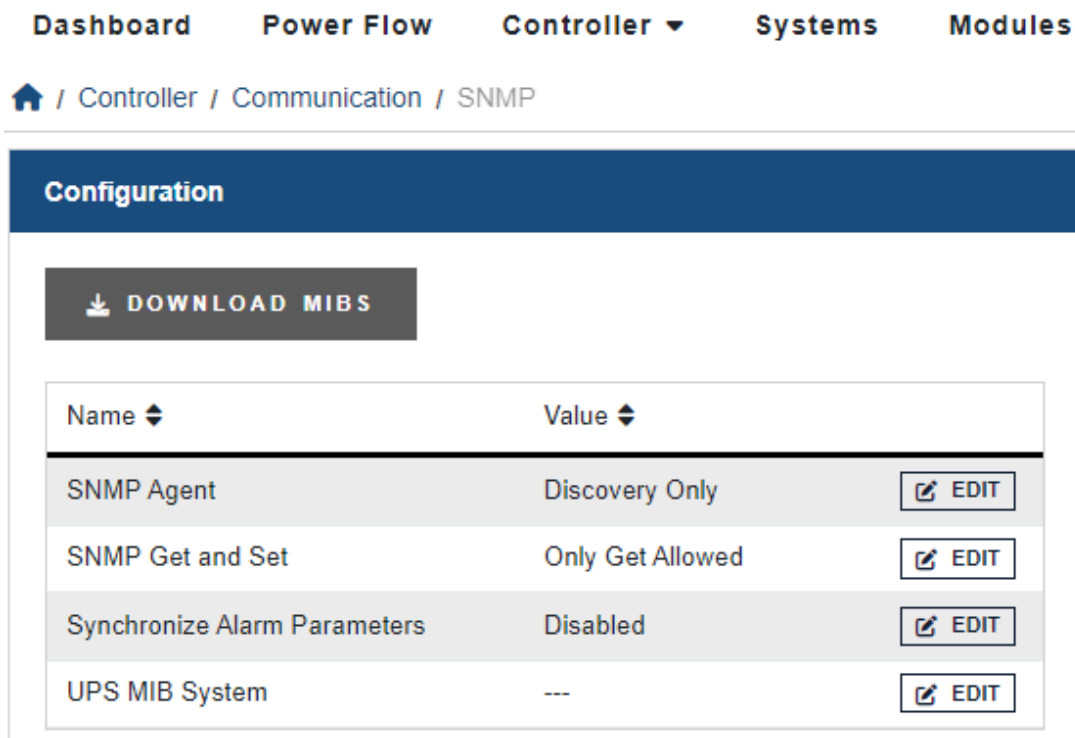


**Notice:** If using SNMPv1: a difference you may see in an SNMPv1 NMS is in the way it performs a MIB WALK. SNMPv2 or SNMPv3 NMS perform a GETBULK command to WALK an MIB. An SNMPv1 NMS performs a sequence of GETNEXT commands to WALK an MIB. The SNMPv1 WALK will expose the fact that the controller MIBs are sparsely populated in some areas. The SNMPv1 WALK makes it look like the controller MIBs have more data values than expected, and most of those values are empty. When doing a SNMPv1 WALK, it is necessary to filter out those empty values.

### 3.8. Downloading controller MIB files

The controller can provide access to all MIBs needed to support SNMP functionality. Visiting the SNMP page will show a button which initiates a download of all MIB files.

Figure 3-6 SNMP configuration page



As an alternative, visit the Alpha® website to download the latest version of the MIB files for the controller are available (<http://www.alpha.ca/web2/software-firmware-downloads>). Some registration information is required to access the page.

Figure 3-7 Software/Firmware Downloads page

Welcome to the Alpha software downloads page.  
As part of our commitment to continuous product improvements new software versions for our products are made available on this website for download. Please click on the appropriate "readme" file to download and view this document before downloading and installing the software.

As a valued customer with access to this page you will also have the benefit of automatic notification of new software releases as they become available. Please contact us to unsubscribe from this service.

If you have any questions please Report a problem form, [Report a Problem Form](#) for technical assistance.

Thanks for your continued support.

Technical Support Services


CONTROLLERS	POWER MODULES	UPS OUTDOOR POWER	UPS INDOOR SINGLE PHASE	AMPS SYSTEMS	LEGACY	OTHER
<b>Compass Card</b>						
Comp@s Changelog Revision 2.11.0.4 ( <a href="#">Read Me</a> ) ( <a href="#">MD5 Checksums</a> ) 12/4/2014 Only revisions with a SOFT 000031 XX code were released in production. The other versions were distributed to customers for upgrade when necessary. <a href="#">Download</a>						
<b>CXC HP Peripherals</b>						
Cordex CXC HP 6i-ADIO Peripheral ( <a href="#">Read Me</a> ) ( <a href="#">MD5 Checksums</a> ) 5/15/2015 CXC HP Smart Peripheral for CXC HP Controller Only; 6 Isolated Current Inputs <a href="#">Download</a>						
Cordex CXC HP L-ADIO Peripheral V2.0 ( <a href="#">Read Me</a> ) ( <a href="#">MD5 Checksums</a> ) 3/22/2022 CXC HP Smart Peripheral for CXC HP Controller Only; Low Voltage (<-60V) Systems <a href="#">Download</a>						
CXC HP HV-ADIO Peripheral ( <a href="#">Read Me</a> ) 8/8/2022 <a href="#">Download</a>						
<b>CORDEX CXC HP SERIES</b>						
Cordex CXC HP Controller SNMP MIB 9/6/2019 SNMP MIB for Cordex CXC HP Controller. Includes support for v2.02+ application features. <b>Note: CXC MIB's are available for download direct from the controller web UI in versions 2.22 and later</b> <a href="#">Download</a>						
Cordex HP Controller Operating System v6.30 ( <a href="#">Read Me</a> ) ( <a href="#">MD5 Checksums</a> ) 7/28/2020 Operating system for the CXC HP Controller. Alpha recommends ensuring that the Operating System is at its latest revision. <a href="#">Download</a>						

There are eight MIB files in the package to support various SNMP functionality to access data from the controller.

- **ALARM-MIB** module defines a list of outstanding alarms and log of alarms that have occurred and have been cleared.
- **ALPHA-CONVERTER-SYS-MIB** module defines the data objects of a converter system.
- **ALPHA-NOTIFICATION-MIB** module defines the notification objects available in the system controller.
- **ALPHA-RECTIFIER-SYS-MIB** module defines the data objects of a DC system.
- **ALPHA-RESOURCE\_MIB** module defines all read and control objects available in the system controller.
- **SNMP-TARGET-MIB** module defines MIB objects which provide mechanisms to remotely configure the parameters used by an entity for the generation of SNMP messages.

- **SNMPv2-MIB** module defines managed objects that describes the properties and behavior of a SNMPv2 entity.
- **UPS-MIB** module defines the objects for a UPS such as the FXM HP UPS system.

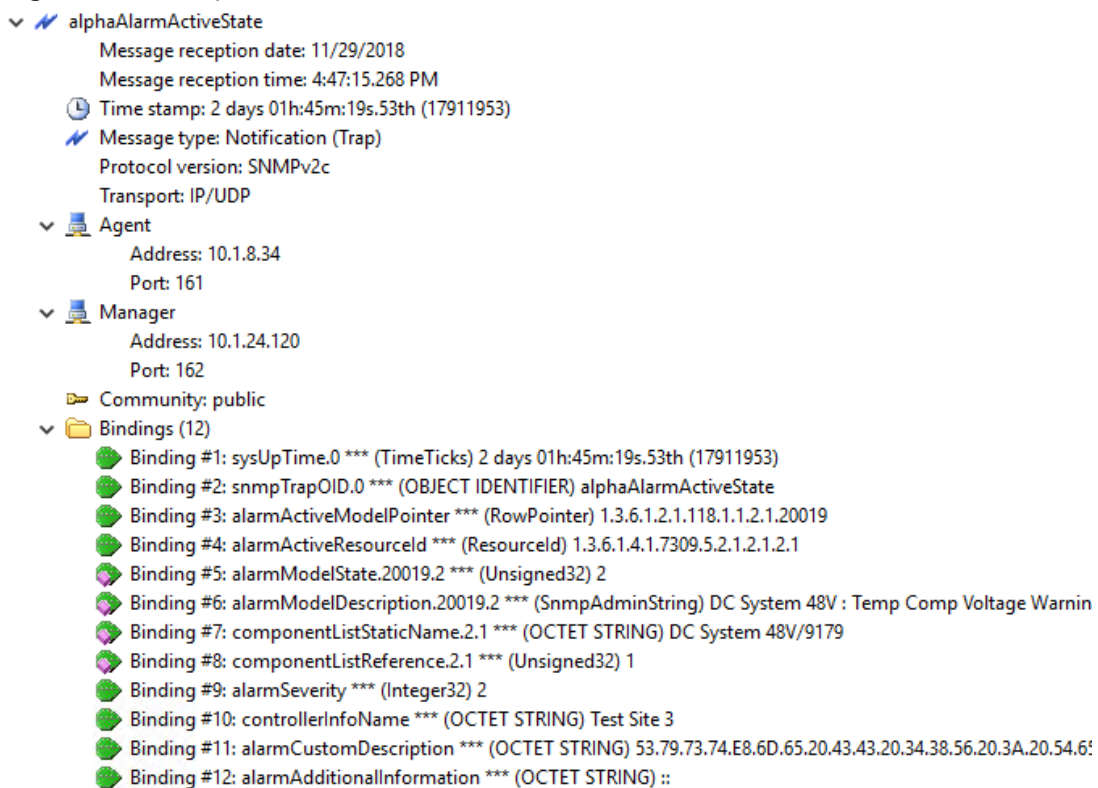
## 4. SNMP reference for the Cordex® CXC HP controller

 **Notice:** Starting from controller version 7.30, if the value for a data field is unknown because the module is not available or not configured, a null value is returned instead of '0'. The NMS might require changes to process the null value properly.

### 4.1. Alarms reference

Figure 3-1 shows controller SNMP notifications

**Figure 4-1** Example Controller SNMP notification



```
alphaAlarmActiveState
  Message reception date: 11/29/2018
  Message reception time: 4:47:15.268 PM
  Time stamp: 2 days 01h:45m:19s.53th (17911953)
  Message type: Notification (Trap)
  Protocol version: SNMPv2c
  Transport: IP/UDP
  Agent
    Address: 10.1.8.34
    Port: 161
  Manager
    Address: 10.1.24.120
    Port: 162
  Community: public
  Bindings (12)
    Binding #1: sysUpTime.0 *** (TimeTicks) 2 days 01h:45m:19s.53th (17911953)
    Binding #2: snmpTrapOID.0 *** (OBJECT IDENTIFIER) alphaAlarmActiveState
    Binding #3: alarmActiveModelPointer *** (RowPointer) 1.3.6.1.2.1.118.1.1.2.1.20019
    Binding #4: alarmActiveResourceID *** (ResourceID) 1.3.6.1.4.1.7309.5.2.1.2.1.2.1
    Binding #5: alarmModelState.20019.2 *** (Unsigned32) 2
    Binding #6: alarmModelDescription.20019.2 *** (SnmpAdminString) DC System 48V : Temp Comp Voltage Warnin
    Binding #7: componentListStaticName.2.1 *** (OCTET STRING) DC System 48V/9179
    Binding #8: componentListReference.2.1 *** (Unsigned32) 1
    Binding #9: alarmSeverity *** (Integer32) 2
    Binding #10: controllerInfoName *** (OCTET STRING) Test Site 3
    Binding #11: alarmCustomDescription *** (OCTET STRING) 53.79.73.74.E8.6D.65.20.43.43.20.34.38.56.20.3A.20.54.65
    Binding #12: alarmAdditionalInformation *** (OCTET STRING) ::
```

Although there are a number of varbinds available for simple alarm mapping and matching, the Alarm Model Pointer and the Alarm Resource ID provide access to a rich set of data. The Alarm Model Pointer provides a pointer into the **Alarm** table where more details about the alarm are available. The Alarm Resource ID provides a pointer to the resource or inventory item that the notification is about.

For example, if you had a **Battery Disconnect** and a **Load Disconnect** open at the same time, both notifications would share the same Alarm Model Pointer of “Disconnect Open”, but one Alarm Resource ID would point to the **Battery Disconnect** and the other Alarm Resource ID would point to the **Load Disconnect**.

The following is a list of all possible alarms that exist in the controller. Due to the dynamic nature and variable setup of a power system, the alarm list is potentially different when monitoring different setups.

For example, if you have two controllers, one controlling a rectifier system and another controlling a converter system, the alarm lists for each one will not be identical. But even with the variable sets of alarms available, a consolidated list of all alarms can provide a reference point to get information of any and all possible notifications coming out of the controller. This is because all alarms are defined with unique identifying features that will not change or be duplicated. The following figure provides you a full list of possible alarms.

Alarm severity is indicated by the last number in the assigned OID. The table below does not list all possible alarm states. Reviewing the Alarm Model table using a SNMP tool will provide all instances of possible alarms and their states.

- 1: Clear
- 2: Message
- 3: Minor
- 4: Major
- 5: Critical

As per the defined standards, all OID references to alarm models not only point to the entry of the model in the table, but also to the corresponding state of that alarm.

**Table 4-1** Alarm reference table

Component list type	Alarm name	OID
1	Controller: Clock Error	10001
1	Controller: CAN Devices In Bootloader	10002
1	Controller: ADIO Comms Lost	10003
1	Controller: Unassigned Modules	10004
1	Controller: Temporary License Expired	10005
1	Controller: Required Feature License Missing	10006
1	Controller: Temporary License In Use	10007
1	Controller: Duplicate SNMP ID	10008
1	Controller: Restart Required	10009
1	Controller: Disk Almost Full	10011
1	Controller: CAN Module Communication Lost Count High	10013
1	Controller: CAN Module Communication Lost Count Very High	10014



**Table 4-1** Alarm reference table (continued)

Component list type	Alarm name	OID
1	Controller: Remote Configuration Lockout Overridden	10015
1	Controller: System OS Upgrade In Progress	10016
1	Controller: Reserve Controller Failed	10017
1	Controller: Main Controller Failed	10018
1	Controller: Main Controller Ethernet Failure	10019
1	Controller: Controller Redundancy CAN Failure	10020
1	Controller: ADIO Redundancy Lost	10021
1	Controller: Maintenance Mode Active	10022
2	DC System: AC Mains Voltage High	20001
2	DC System: AC Mains Voltage Low	20002
2	DC System: Urgent AC Mains Fail	20003
2	DC System: Output Voltage High	20004
2	DC System: Output Voltage Very High	20005
2	DC System: Output Voltage Low	20006
2	DC System: Output Voltage Very Low	20007
2	DC System: Invalid System Voltage Reading	20008
2	DC System: Battery On Discharge (Deprecated. Always return Inactive (0). Use Battery System: Battery On Discharge Alarm )	20009
2	DC System: Rectifier Fail	20010
2	DC System: Rectifier Fail Count Very High (previously: Rectifier Major Fail Count)	20011
2	DC System: Rectifier Fail Count High (previously: Rectifier Minor Fail Count)	20012
2	DC System: Rectifier Minor	20013
2	DC System: Rectifier Comms Lost	20014
2	DC System: AC Mains Fail	20015
2	DC System: Fan Fail	20016
2	DC System: Battery Test (Deprecated. Always return Inactive (0). Use Battery System: Battery Test Alarm )	20017

**Table 4-1** Alarm reference table (continued)

Component list type	Alarm name	OID
2	DC System: Temp Comp Measurement Fail (Deprecated. Always return Inactive (0). Use Battery System: Temp Comp Measurement Fail Alarm)	20018
2	DC System: Temp Comp Voltage Warning (Deprecated. Always return Inactive (0). Use Battery System: Temp Comp Voltage Warning Alarm)	20019
2	DC System: Battery Runtime Low	20020
2	DC System: Battery Health Low (Deprecated. Always return Inactive (0). Use Battery System: Battery Health Low Alarm)	20021
2	DC System: Rectifier Configuration Error	20022
2	DC System: Insufficient Capacity Remaining (Current)	20023
2	DC System: Insufficient Capacity Remaining (Power)	20024
2	DC System: Missing Rectifier	20025
2	DC System: Rectifier AC Fail Count High	20026
2	DC System: Rectifier AC Fail Count Very High	20027
2	DC System: Total Load Current High Alarm	20028
2	DC System: Total Load Current Very High Alarm	20029
2	DC System: GFD Earth Current High	20030
3	ADIO: Ground Fault Resistance Low	30001
3	ADIO: Ground Fault Current High	30002
3	Fan Tray: Fan Fail Alarm	30003
3	ADIO: Temperature Sensor #1 Failure	30101
3	ADIO: Temperature Sensor #2 Failure	30102
3	ADIO: Temperature Sensor #3 Failure	30103
3	ADIO: Temperature Sensor #4 Failure	30104
3	ADIO: Temperature Sensor #5 Failure	30105
10	Battery System: Battery Charge Current High	100001
10	Battery System: Battery Temperature High	100002
10	Battery System: Battery Temperature Low	100003
10	Battery System: Battery Breaker/Fuse Open	100004

**Table 4-1** Alarm reference table (continued)

Component list type	Alarm name	OID
10	Battery System: Midpoint #1 Unbalanced (Deprecated. Always returns Inactive (0). Use Battery String: Midpoint Unbalanced Alarm)	100005
10	Battery System: Midpoint #2 Unbalanced (Deprecated. Always returns Inactive (0). Use Battery String: Midpoint Unbalanced Alarm)	100006
10	Battery System: Battery Temperature Anomaly	100007
10	Battery System: Battery Test	100008
10	Battery System: Battery On Discharge	100009
10	Battery System: Temp Comp Measurement Fail	100010
10	Battery System: Temp Comp Voltage Warning	100011
10	Battery System: Battery Runtime Low	100012
10	Battery System: Battery Health Low	100013
11	Disconnect: Disconnect Inhibit	110001
11	Disconnect: Disconnect Pending	110002
11	Disconnect: Disconnect Active	110003
11	Disconnect: Disconnect Open	110004
11	Disconnect: Manually Closed	110005
11	Disconnect: Manually Opened	110006
12	Load: Load Voltage High	120001
12	Load: Load Current High	120002
12	Load: Load Breaker/Fuse Open	120003
12	Load: Load Voltage Low	120004
12	Load: Load Current Very High	120005
15	CAN Bus: Bus State Alarm	150001
15	CAN Bus: Max CAN Devices Exceeded	150002
16	Converter System: Output Voltage Low	160001
16	Converter System: Output Voltage High	160002
16	Converter System: Converter Fail	160003
16	Converter System: Converter Major Fail Count	160004
16	Converter System: Converter Minor Fail Count	160005

**Table 4-1** Alarm reference table (continued)

Component list type	Alarm name	OID
16	Converter System: Converter Minor	160006
16	Converter System: Converter Comms Lost	160007
16	Converter System: Input Voltage Fail	160008
16	Converter System: Converter Configuration Error	160009
16	Converter System: Converter Fan Fail	160010
16	Converter System: Output Voltage Very Low	160011
16	Converter System: Output Voltage Very High	160012
16	Converter System: Missing Converter	160013
16	Converter System: Total Load Current High	160014
16	Converter System: Total Load Current Very High	160015
17	Digital User Alarm: User-Defined	170001
18	Threshold User Alarm: User-Defined	180001
19	Inverter System: T2S Comms Lost	190001
19	Inverter System: Inverter Comms Lost	190002
19	Inverter System: Inverter Fan Failure	190003
19	Inverter System: Inverter Internal Error	190004
19	Inverter System: Inverter Restarts	190005
19	Inverter System: Inverter Overload	190006
19	Inverter System: Inverter Configuration Error	190007
19	Inverter System: Inverter Output Voltage Change in Progress	190009
19	Inverter System: Inverter Not Ready	190010
19	Inverter System: Inverter Temperature Derating	190011
19	Inverter System: Inverter Low Input Voltage Brownout	190012
19	Inverter System: Inverter Fan Life Elapsed	190013
19	Inverter System: Inverter Off	190014
19	Inverter System: Inverter AC Input Voltage Low	190015
19	Inverter System: Inverter AC Input Voltage High	190016
19	Inverter System: Inverter AC Input Error	190017

**Table 4-1** Alarm reference table (continued)

Component list type	Alarm name	OID
19	Inverter System: Inverter Frequency Out of Range	190018
19	Inverter System: Inverter DC Input Voltage Low	190019
19	Inverter System: Inverter DC Input Voltage High	190020
19	Inverter System: T2S Digital Input 1	190021
19	Inverter System: T2S Digital Input 2	190022
19	Inverter System: Redundancy Lost	190023
19	Inverter System: All Redundancy Lost	190024
19	Inverter System: System Overloaded	190025
19	Inverter System: Main Source Lost	190026
19	Inverter System: Secondary Source Lost	190027
19	Inverter System: T2S Fail	190028
19	Inverter System: T2S Log Nearly Full	190029
19	Inverter System: System Error	190030
19	Inverter System: Inverter Imminent Shutdown	190031
19	Inverter System: TUS Synchronization Error	190032
19	Inverter System: TUS Internal Error	190034
19	Inverter System: TUS Configuration Error	190035
19	Inverter System: T2S Refusing Commands	190037
19	Inverter System: Missing T2S	190038
20	Bypass Switch: Bypass Active	200001
27	Breaker or Fuse: Breaker / Fuse Open	270001
31	Line Power System: Input Voltage High Shutdown	310001
31	Line Power System: High Temperature Shutdown	310003
31	Line Power System: Temperature Warning	310004
31	Line Power System: Module Connection Error	310005
31	Line Power System: Channel Over Voltage Shutdown	310006
31	Line Power System: Channel Ground Fault Shutdown	310007
31	Line Power System: Channel Output Voltage Low Shutdown	310008

**Table 4-1** Alarm reference table (continued)

Component list type	Alarm name	OID
31	Line Power System: Channel Over Current Shutdown	310009
31	Line Power System: Channel Disabled	310010
31	Line Power System: Channel Current Sensor Shutdown	310011
31	Line Power System: Input Voltage Low Shutdown	310015
31	Line Power System: LP Module Comms Lost	310016
31	Line Power System: Output Current Low	310017
31	Line Power System: Output Current High	310018
31	Line Power System: Output Power Low	310019
31	Line Power System: Output Power High	310020
31	Line Power System: Input Current (Est.) Low	310021
31	Line Power System: Input Current (Est.) High	310022
31	Line Power System: Input Power (Est.) Low	310023
31	Line Power System: Input Power (Est.) High	310024
31	Line Power System: Channel Fuse Shutdown	310025
31	Line Power System: Average Input Voltage Low	310026
31	Line Power System: Duplicate Shelf ID Detected	310027
31	Line Power System: Invalid Shelf ID Detected	310028
31	Line Power System: LP Module Configuration Error	310029
31	Line Power System: Missing LPS Module	310030
32	LP Module: Channel 1 Shutdown	320001
32	LP Module: Channel 2 Shutdown	320002
32	LP Module: Channel 3 Shutdown	320003
32	LP Module: Channel 4 Shutdown	320004
32	LP Module: Module Failure	320100
33	LP Load: Load Current Low	330001
33	LP Load: Load Current High	330002
33	LP Load: Load Power Low	330003
33	LP Load: Load Power High	330004

**Table 4-1** Alarm reference table (continued)

Component list type	Alarm name	OID
33	LP Load: Channel In Alert	330005
35	Panel: Breaker Trip	350001
35	Panel: Loss Of Feed	350010
35	Panel: Over Current	350011
37	Referenced Load: Load Breaker/Fuse Open	370003
41	FXM HP System: Missing FXM HP	410001
41	FXM HP System: Low Battery 1	410002
41	FXM HP System: Low Battery 2	410003
41	FXM HP System: Low Battery + No Line 1	410004
41	FXM HP System: On Battery	410005
41	FXM HP System: Fan Failure	410006
41	FXM HP System: AC Input Frequency Low	410007
41	FXM HP System: AC Input Frequency High	410008
41	FXM HP System: Battery Breaker Open	410009
41	FXM HP System: AC Input Breaker Open	410010
41	FXM HP System: AC Output Overloaded	410011
41	FXM HP System: AC Output Short Circuit	410012
41	FXM HP System: Power Outage	410013
41	FXM HP System: Battery Temperature Probe Unplugged	410014
41	FXM HP System: Internal Temperature Fault	410015
41	FXM HP System: AC Output Voltage High	410016
41	FXM HP System: AC Output Voltage Low	410017
41	FXM HP System: AC Input Voltage High	410018
41	FXM HP System: AC Input Voltage Low	410019
41	FXM HP System: Battery Over Voltage	410020
41	FXM HP System: Battery Under Voltage	410021
41	FXM HP System: Battery Fail Fault	410022
41	FXM HP System: AC Input Backfeed Failure	410023

**Table 4-1** Alarm reference table (continued)

Component list type	Alarm name	OID
41	FXM HP System: Frequency Unknown	410024
41	FXM HP System: Inverter Cutoff Imminent	410025
41	FXM HP System: Bypass Mode On	410027
41	FXM HP System: Keep Alive Failure	410028
41	FXM HP System: Low Battery + No Line 2	410029
41	FXM HP System: AUX Shutdown Imminent	410030
42	Disconnect With Exclusion: Disconnect Pending	420001
42	Disconnect With Exclusion: Disconnect Active	420003
48	General Purpose Transducer: XDCR Fail Input High	480001
48	General Purpose Transducer: XDCR Fail Input Low	480002
49	Change Field To Variable: Value Out Of Range	490001
50	Battery System Battery String: Battery Temperature High	500001
50	Battery System Battery String: Battery Temperature Low	500002
50	Battery System Battery String: Battery Breaker/Fuse Open	500003
50	Battery System Battery String: Midpoint Unbalanced	500004
50	Battery System Battery String: Battery Temperature Anomaly	500005
53	DC Source: Generator Status Mismatch	530001
53	DC Source: Generator Running Too Long	530002
54	Data Subscriptions: Communication Error	540001
55	Generic Disconnect: Disconnect Inhibit	550001
55	Generic Disconnect: Disconnect Pending	550002
55	Generic Disconnect: Disconnect Active	550003
55	Generic Disconnect: Disconnect Open	550004
55	Generic Disconnect: Disconnect Manually Closed	550005
55	Generic Disconnect: Disconnect Manually Open	550006
57	AC Source: AC Fail	570001
57	AC Source: Urgent AC Fail	570002
57	AC Source: Generator Status Mismatch	570003



**Table 4-1** Alarm reference table (continued)

Component list type	Alarm name	OID
57	AC Source: Generator Running Too Long	570004
57	AC Generator: AC Fail	570001
57	AC Generator: Urgent AC Fail	570002
57	AC Generator: Generator Status Mismatch	570003
57	AC Generator: Generator Running Too Long	570004
62	Bypass Switch XMBS: Bypass Active	620001
62	Bypass Switch XMBS: Utility-Inverter Sync. Request Fault	620002
62	Bypass Switch XMBS: Bypass Hardware Fault	620003
67	Thermal System: Thermal Controller Comms Lost	670001
67	Thermal System: Internal Temperature High	670002
67	Thermal System: Internal Temperature Low	670003
67	Thermal System: Cabinet Door Left Open	670004
67	Thermal System: Filter Replacement Required	670005
67	Thermal System: Fan Fail	670006
68	Battery Disconnect with Latching Contactor: Disconnect Inhibit	680001
68	Battery Disconnect with Latching Contactor: Disconnect Pending	680002
68	Battery Disconnect with Latching Contactor: Disconnect Active	680003
68	Battery Disconnect with Latching Contactor: Disconnect Open	680004
68	Battery Disconnect with Latching Contactor: Contactor State Error	680007
70	Hyperboost System: Battery Bus Voltage Low	700001
70	Hyperboost System: Battery Bus Voltage High	700002
70	Hyperboost System: Battery Bus Voltage Very Low	700003
70	Hyperboost System: Battery Bus Voltage Very High	700004
70	Hyperboost System: Load Bus Voltage Low	700005
70	Hyperboost System: Load Bus Voltage High	700006
70	Hyperboost System: Load Bus Voltage Very Low	700007
70	Hyperboost System: Load Bus Voltage Very High	700008
70	Hyperboost System: Missing Converter	700009

**Table 4-1** Alarm reference table (continued)

Component list type	Alarm name	OID
70	Hyperboost System: Battery Bus Input Voltage Fail	700010
70	Hyperboost System: Load Bus Input Voltage Fail	700011
70	Hyperboost System: Converter Comms Lost	700012
70	Hyperboost System: Converter Fan Fail	700013
70	Hyperboost System: Converter Minor	700014
70	Hyperboost System: Converter Fail	700015
70	Hyperboost System: Converter Fail Count Very High	700016
70	Hyperboost System: Converter Fail Count High	700017
74	AC Generator: AC Fail	740001
74	AC Generator: Urgent AC Fail	740002
74	AC Generator: Generator Running Too Long	740003
74	AC Generator: Generator Startup Frequency High	740004
74	AC Generator: Generator Status Mismatch	740005
75	DC Generator: Generator Running Too Long	750003
75	DC Generator: Generator Startup Frequency High	750004
75	DC Generator: Generator Status Mismatch	750005
95	Polarium Battery Module: Battery Temperature High	950001
95	Polarium Battery Module: Battery Temperature Low	950002
95	Polarium Battery Module: Battery Temperature Anomaly	950003
95	Polarium Battery Module: Battery Breaker/Fuse Open	950004
95	Polarium Battery Module: Anti Theft Alarm	950005
95	Polarium Battery Module: Short Circuit Alarm	950006
95	Polarium Battery Module: Under Voltage Alarm	950007
96	Polarium Battery System: Battery Temperature High	960001
96	Polarium Battery System: Battery Temperature Low	960002
96	Polarium Battery System: Battery Breaker/Fuse Open	960003
96	Polarium Battery System: Battery On Discharge	960004
97	Matrix C16: Overcurrent Warning	970001

**Table 4-1** Alarm reference table (continued)

Component list type	Alarm name	OID
97	Matrix C16: Overcurrent	970002
97	Matrix C16: Bus A Breaker On But not in Inventory	970003
97	Matrix C16: Bus A Breaker Overloaded	970004
97	Matrix C16: Bus A Breaker Trip	970005
97	Matrix C16: Bus A Overloaded	970006
97	Matrix C16: Bus A Over Voltage	970007
97	Matrix C16: Bus A Under Voltage	970008
97	Matrix C16: Bus B Breaker On But not in Inventory	970009
97	Matrix C16: Bus B Breaker Overloaded	970010
97	Matrix C16: Bus B Breaker Trip	970011
97	Matrix C16: Bus B Overloaded	970012
97	Matrix C16: Bus B Over Voltage	970013
97	Matrix C16: Bus B Under Voltage	970014

## 4.2. Alarm mapping example

Here are two examples of a notification on the same alarm: one active and one clear. These show how matching can be done.

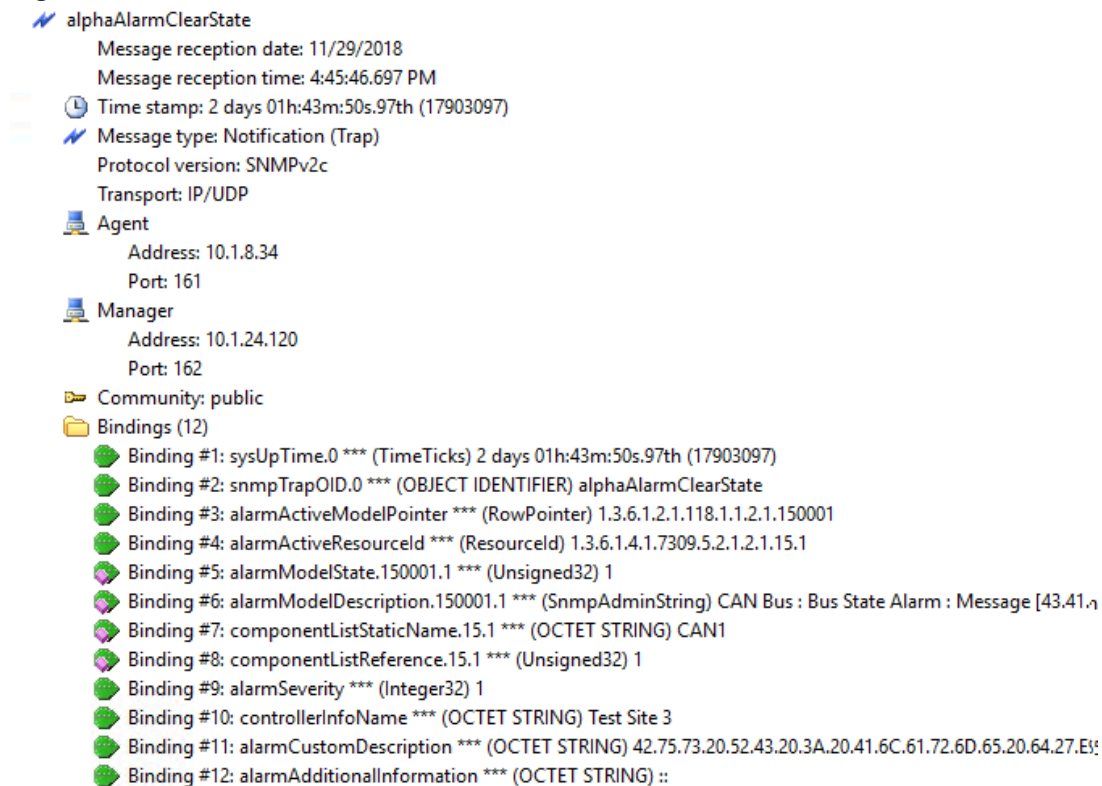
**Binding #2:** Shows the type of notification: active or clear.

**Binding #3:** Is a row pointer to the alarm model of the alarm being reported. This pointer will always point to the original alarm and its priority. It is recommended that this value is used for active and clear notification matching.

All other bindings are added to provide the details needed to identify and process the alarm being reported.

**Figure 4-2** Notification - Alarm active

- Message reception date: 11/29/2018
    - Message reception time: 4:47:15.268 PM
    - Time stamp: 2 days 01h:45m:19s.53th (17911953)
    - Message type: Notification (Trap)
    - Protocol version: SNMPv2c
    - Transport: IP/UDP
  - Agent
    - Address: 10.1.8.34
    - Port: 161
  - Manager
    - Address: 10.1.24.120
    - Port: 162
  - Community: public
  - Bindings (12)
    - Binding #1: sysUpTime.0 \*\*\* (TimeTicks) 2 days 01h:45m:19s.53th (17911953)
    - Binding #2: snmpTrapOID.0 \*\*\* (OBJECT IDENTIFIER) alphaAlarmActiveState
    - Binding #3: alarmActiveModelPointer \*\*\* (RowPointer) 1.3.6.1.2.1.118.1.1.2.1.20019
    - Binding #4: alarmActiveResourceId \*\*\* (ResourceId) 1.3.6.1.4.1.7309.5.2.1.2.1.2.1
    - Binding #5: alarmModelState.20019.2 \*\*\* (Unsigned32) 2
    - Binding #6: alarmModelDescription.20019.2 \*\*\* (SnmAdminString) DC System 48V : Temp Comp Voltage Warnin
    - Binding #7: componentListStaticName.2.1 \*\*\* (OCTET STRING) DC System 48V/9179
    - Binding #8: componentListReference.2.1 \*\*\* (Unsigned32) 1
    - Binding #9: alarmSeverity \*\*\* (Integer32) 2
    - Binding #10: controllerInfoName \*\*\* (OCTET STRING) Test Site 3
    - Binding #11: alarmCustomDescription \*\*\* (OCTET STRING) 53.79.73.74.E8.6D.65.20.43.20.34.38.56.20.3A.20.54.6!
    - Binding #12: alarmAdditionalInformation \*\*\* (OCTET STRING) ::

**Figure 4-3** Notification - Alarm clear

### 4.3. Alarm history and alarm auditing

Two tables defined by the ALARM-MIB are active alarms and cleared alarms. The active alarm table lists the currently active alarms and allows an NMS to audit the alarms list to ensure that the NMS and the controller have the same list of active alarms. The cleared alarm table lists the occurrence of an alarm being cleared, including the time of the event. This cleared alarm list provides a historical log of events. If an alarm toggles between active and cleared, each cleared event is logged.

Alarm transitions are recognized as a change of state between active and clear. However, alarms on the controller can also go into an unknown state. This is particularly relevant at configuration time when alarms are being added, removed, enabled, and disabled (for example, when a **User Alarm** is deleted). When an active alarm is disabled or removed, the SNMP agent will treat the alarm as if it has cleared. The SNMP agent will remove the alarm from the active table, and then add an entry to the cleared alarm table.

When the controller is reset, the active and cleared alarm tables will be empty.

### 4.4. Alarms configuration

The Alpha® Resource MIB provides access to the writable configuration fields for all controller and components alarms. Using these configuration fields, the alarms properties such as alarm enable and

priority can be changed remotely. Each alarm comes with a set of configuration fields that is accessible through SNMP. To determine the base SNMP ID of an alarm, multiply the alarm OID by 100. For example:

The OID for Controller: Clock Error Alarm is 10001; therefore, the base SNMP ID for Clock Error Alarm configuration fields is 1000100.

There are two types of alarm: Digital and Threshold alarm.

### Digital alarms

**Table 4-2** Digital alarm configuration fields

Name	SNMP ID	Description
Alarm Processing	Base SNMP ID	Enable or disable alarm monitoring.
Alarm Priority	Base SNMP ID + 1	Priority at which alarm should be reported. The value can be <b>Warning</b> , <b>Minor</b> , <b>Major</b> , or <b>Critical</b> .
Parameter 1	Base SNMP ID + 2	A customizable user value to be used for filtering or other monitoring activities for alarm notifications. This correlates to the SNMP Severity varbind in the Alpha Notification varbind list.
Custom Name (Parameter 2)	Base SNMP ID + 3	A user definable alarm name that replaces the default alarm name on the UI. It also appears in the SNMP Custom Description varbind in the Alpha Notification varbind list.

**Figure 4-4** Table view of configuration list table for digital alarm

Instance	configurationListReference(IDX)	configurationListName	configurationListType	configurationListUnit
1.100	1.100	Controller : Configuration Restore Points	5	(zero-length)
1.1000100	1.1000100	Controller : Clock Error Alarm Processing	5	(zero-length)
1.1000101	1.1000101	Controller : Clock Error Priority	5	(zero-length)
1.1000102	1.1000102	Controller : Clock Error Parameter 1	1	(zero-length)
1.1000103	1.1000103	Controller : Clock Error Custom Name (Parameter 2)	4	(zero-length)
1.1000200	1.1000200	Controller : CAN Devices In Bootloader Alarm Processing	5	(zero-length)
1.1000201	1.1000201	Controller : CAN Devices In Bootloader Priority	5	(zero-length)

### Threshold alarms

**Table 4-3** Threshold alarm configuration fields

Name	SNMP ID	Description
Alarm Processing	Base SNMP ID	Enable or disable alarm monitoring.
Alarm Priority	Base SNMP ID + 1	Priority at which alarm should be reported. The value can be <b>Warning</b> , <b>Minor</b> , <b>Major</b> , or <b>Critical</b> .
Parameter 1	Base SNMP ID + 2	A customizable user value to be used for filtering and/or other monitoring activities for alarm notifications. This

**Table 4-3** Threshold alarm configuration fields (continued)

Name	SNMP ID	Description
		correlates to the SNMP Severity varbind in the Alpha Notification varbind list.
Custom Name (Parameter 2)	Base SNMP ID + 3	A user definable alarm name that replaces the default alarm name on the user interface. It also appears in the SNMP Custom Description varbind in the Alpha Notification varbind list.
Limit	Base SNMP ID + 4	The alarm will be active when the input is either above or below this limit depending on if it is a high or low threshold alarm
Hysteresis	Base SNMP ID + 5	Size of dead zone between activation and deactivation.

**Figure 4-5** Table view of configuration list table for threshold alarm

Instance	configurationListReference(IDX)	configurationListName	configurationListType	configurationListUnit
2.2000100	2.2000100	DC System 48V : AC Input Voltage High Alarm Processing	5	(zero-length)
2.2000101	2.2000101	DC System 48V : AC Input Voltage High Priority	5	(zero-length)
2.2000102	2.2000102	DC System 48V : AC Input Voltage High Parameter 1	1	(zero-length)
2.2000103	2.2000103	DC System 48V : AC Input Voltage High Custom Name (Parameter 2)	4	(zero-length)
2.2000104	2.2000104	DC System 48V : AC Input Voltage High Limit	1	V
2.2000105	2.2000105	DC System 48V : AC Input Voltage High Hysteresis	1	V
2.2000200	2.2000200	DC System 48V : AC Input Voltage Low Alarm Processing	5	(zero-length)
2.2000201	2.2000201	DC System 48V : AC Input Voltage Low Priority	5	(zero-length)
2.2000202	2.2000202	DC System 48V : AC Input Voltage Low Parameter 1	1	(zero-length)
2.2000203	2.2000203	DC System 48V : AC Input Voltage Low Custom Name (Parameter 2)	4	(zero-length)

For additional information on how to set the values of configuration fields, refer to *Configuration Field Type List*.

## 4.5. Cordex® CXC HP controller MIB files

The MIB files used to monitor the controller are a combination of standard MIB files and vendor specific MIB files. The vendor specific MIB files are tagged with the ALPHA- prefix.

- **SNMPv2-MIB** extracted from RFC3418
- **ALARM-MIB** extracted from RFC3877
- **SNMP-TARGET-MIB** extracted from RFC3413
- **ALPHA-NOTIFICATION-MIB**
- **ALPHA-RESOURCE-MIB**
- **ALPHA-RECTIFIER-SYS-MIB**
- **ALPHA-CONVERTER-SYS-MIB**
- **UPS-MIB** extracted from RFC1628

## SNMPv2-MIB

This MIB provides controller information allowing it to be easily identified as a network device. The SNMP discovery feature in most NMS systems uses the data published through the SNMPv2-MIB for discovering network devices. Refer to RFC 3418, or the MIB file, for a more detailed explanation.

## ALARM-MIB

The controller takes advantage of the ALARM-MIB to define the structure and basic behavior of an Alarm Notification. The following tables from the ALARM-MIB are used:

- Alarm Model
- Alarm Active
- Alarm Clear

This MIB defines the alarm modeling and auditing. The model table provides a list of alarms available on the controller. The list follows the dynamic nature of the monitored systems and devices, and will add or remove conceptual rows as alarms come in or out of availability. Refer to RFC 3877, or the MIB file, for a more detailed explanation on alarm modeling.

Auditing for alarms can be done by looking at the **Active Alarms** and **Cleared Alarms** tables. Refer to RFC3877, or the MIB file, for a more detailed explanation on these tables.



**Notice:** *The generic notification definition provided in the ALARM-MIB is not used by the controller. The ALPHA-NOTIFICATION-MIB provides a more detailed varbind list applicable to power system monitoring.*



**Notice:** *For controller systems using UPS-MIB such as FXM HP UPS, any changes to the alarm status would send two notifications to the NMS. One notification is defined by ALPHA-NOTIFICATION-MIB, and the second notification is defined by UPS-MIB. For a more detailed description on the UPS-MIB notification, refer to RFC1628.*

## SNMP-TARGET-MIB

The controller provides 10 SNMP destinations for the NMS to configure notifications reporting, or notification subscriptions. Providing IP addresses of the NMS sets the controller to send alarm notifications to these destinations. Refer to RFC 3413, or the MIB file, for a more detailed explanation.

The current implementation takes advantage of the following set of data for each destination:

- IP address
- Time out (for acknowledged notifications)
- Retry count (for acknowledged notifications)



Configuring an IP address will activate notifications for that target. Entering a time out period greater than zero will send notifications that require acknowledgment from the NMS to the controller (INFORM).

## ALPHA-NOTIFICATION-MIB

This MIB provides two custom-defined notifications for alarm reporting:

- Active alarm
- Cleared alarm

The payload of the notification (varbind list) provides all the details of the alarm and can be used for filtering or monitoring specific alarms.



**Notice:** Both definitions of the notification objects (active and cleared) carry the same varbind list. The two notifications were defined to allow easier filtering and matching of active and clear notifications on the NMS.

## ALPHA-RESOURCE-MIB

The Alpha® Resource MIB is designed with forward compatibility in mind. Using database type table design and data referencing, the MIB structure will allow dynamic additions of new components and data to the controller without any changes to the MIB. See the section on SNMP Reference for an SNMP table indexing overview.

This MIB provides access to the information base of the controller. The major structures defined in the MIB are:

- **ControllerInfo:** Controller level information.
- **Components:** Objects that contain informational fields for data access. Objects such as systems and devices as well as information groupings. For example, in the case where you have a DC system with ten rectifiers, the table would include a row for the DC system and a row for each individual rectifier.
- **DataFieldType: Data field types** available from a specific component source. Data fields describe a set of read-only data access. For example, with a DC system and ten rectifiers, the table would present a list of available field types of a DC system and a rectifier.
- **DataFields: Data fields** available from all component sources. Combine the unique index of the **DataFieldType** row, along with the assigned ID of the component, to access this information.
- **ConfigurationList: Configuration fields** available from a specific component source. Configuration fields describe a set of read-write data access. For example, with a DC system and ten rectifiers, the table would present a list of available configuration types of a DC system and a of a rectifier.
- **ConfigurationFields: Configuration fields** available from all component sources. Combine the unique index of the **ConfigurationFieldType**: Row, along with the assigned ID of the component, to access this information.

- **CommandFieldType:** *(Currently not supported. Reserved for future development.)* **command field types** available from a specific component source. Command fields describe a set of write-only data access. For example, with a DC system and ten rectifiers, the table would present a list of available command types of a DC system and of a rectifier.
- **CommandFields:** *(Currently not supported. Reserved for future development.)* **command fields** available from all component sources. Combine the unique index of the **CommandFieldType** row, along with the assigned ID of the component to access this information.
- **ConfigurationChoiceList:** **Configuration choices** provide lists of string values for the **State** data type configuration fields.

## ALPHA-RECTIFIER-SYS-MIB

For small systems with a single DC system monitored by the controller, the ALPHA-RECTIFIER-SYS-MIB provides a flat list of the most common data points used. Refer to the MIB for details of data points available.



**Notice:** *This MIB does not provide any information in the case there are multiple DC systems monitored by the controller. The ALPHA-RESOURCE-MIB is the source of data for multiple systems monitoring.*

## ALPHA-CONVERTER-SYS-MIB

For small systems with a single converter system monitored by the controller, the ALPHA-CONVERTER-SYS-MIB provides a flat list of the most common data points used. Refer to the MIB for details of data points available.



**Notice:** *This MIB does not provide any information in the case there are multiple converter systems monitored by the controller. The ALPHA-RESOURCE-MIB is the source of data for multiple systems monitoring.*

## UPS-MIB

The controller takes advantage of the UPS-MIB to define the structure and basic behavior of a UPS system. The following tables from the UPS-MIB are supported:

- Device Identification
- Battery
- Input
- Output
- Alarm
- Well Known Alarm
- Traps Notification

The tables provide a list of UPS specific objects available on the controller. Refer to RFC 1628, or the UPS-MIB file, for a more detailed explanation and specification of the supported objects.

**Notice:** For controller systems using UPS-MIB such as FXM HP UPS, any changes to the alarm status would send two notifications to the NMS. One notification is defined by ALPHA-NOTIFICATION-MIB, and the second notification is defined by UPS-MIB. For a more detailed description on the UPS-MIB notification, refer to RFC1628.

## 4.6. SNMP MIB reference

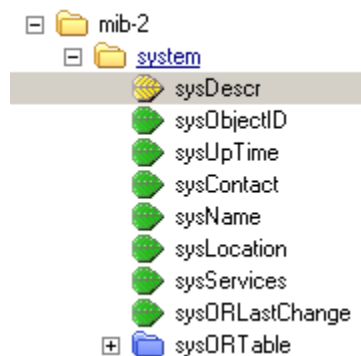
Along with basic presentation of data in flat tables, the controller takes advantage of some of the more sophisticated features of the SNMP protocol. For example, augmented tables and table indexing methods. There is extensive use of augmented tables and external table indexes in both the predefined standard MIBs and the Alpha® MIBs. This section provides details of these features to help you use SNMP.

### Flat tables

Flat tables are the simplest and most commonly used technique of presenting a set of related data. The word table is not the most accurate way to describe this structure. It is closer to a folder containing a set of non-iterative data fields.

Data retrieval is a simple GET of the OID of interest. The following image shows a list of fields presented in the system folder as described by the SNMPv2-MIB. The highlighted field is accessed by using OID: 1.3.6.1.2.1.1.1

**Figure 4-6** Field list for SNMPv2-MIB



### Tables

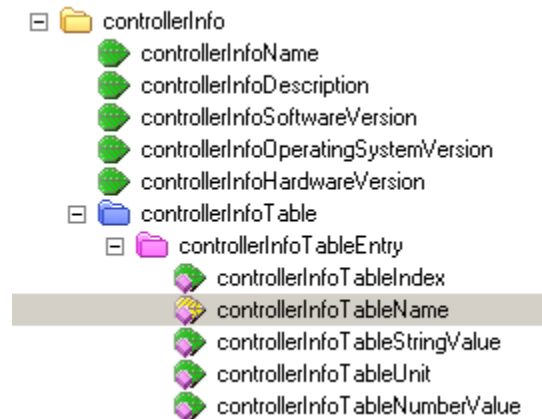
From Figure 3-7, the highlighted folder at the bottom of the image is a representation of a standard table with a set of columns and dynamic range of conceptual rows. Just like a flat table, each column has an OID to get access to the represented data. The additional variables are the possibility of multiple instances of rows that the table can have.

The highlighted folder, called the TableEntry, represents a conceptual row or instance of the row with the fields within the folder as columns of the table.

Data access of the column within a particular row will need to contain the combination of the Entry OID, column index and row index. For example, to access the name of the data held in the third row of the table, the OID combination is:

(Entry OID) 1.3.6.1.4.1.7309.5.1.100.1 + (Column Index) 2 + (Row Index) 3

**Figure 4-7** Table from Alpha® Resource MIB



## Augmented tables

Augmented tables describe the relationship between two or more tables whose conceptual rows have a one to one relationship with each other. A row in one table directly extends a row in another table and uses the same row index.

## Tables with external indexes

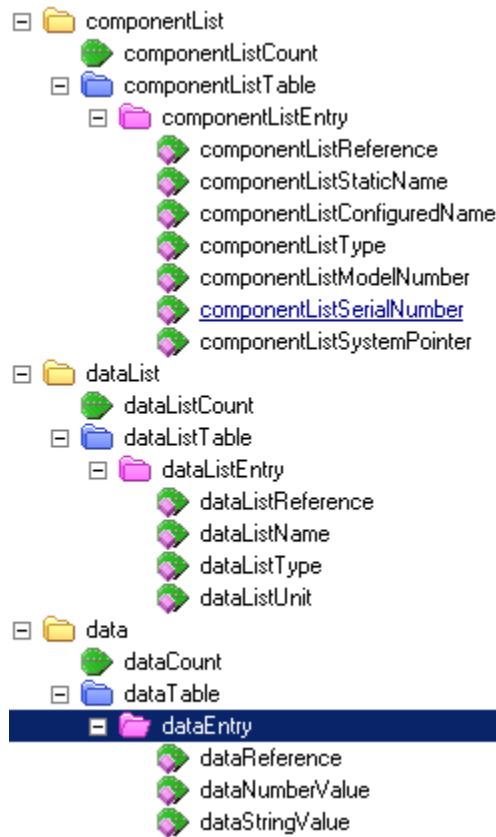
Data access from tables that have multiple indexes, and/or multiple external indexes, use the same index manipulation as described above. The MIB file would define the table with details of indexes used to access the data. The only difference in accessing this type of table is the additional process of putting the required indexes together.



**Notice:** *The order of the indexes must match the order described in the defining MIB. The use of multiple external, or internal indexes, follows the general pattern of database tables using private and foreign keys.*

Figure 3-8 shows three tables from the Alpha® Resource MIB that have index dependencies. The **dataTable** has dependencies from the **componentListTable** and from the **dataListTable** as described in its properties, which is shown in Figure 3-9.

**Figure 4-8** Tables from Alpha® Resource MIB



**Figure 4-9** Tables from Alpha® Resource MIB

Name:	dataEntry
Type:	OBJECT-TYPE
OID:	1.3.6.1.4.1.7309.5.2.3.2.1
Full path:	iso(1).org(3).dod(6).internet(1).private(4).enterprises(1).alpha(73)
Module:	ALPHA-RESOURCE-MIB
Parent:	dataTable
First child:	dataReference
Numerical syntax:	Null
Base syntax:	DataEntry
Composed syntax:	DataEntry
Status:	current
Max access:	not-accessible
Sequences:	1: dataReference - OCTET STRING(4 - octets) 2: dataNumberValue - ScaledNumber(2 - integer (32 bit)) 3: dataStringValue - OCTET STRING(4 - octets)
Indexes:	1: dataListReference 2: componentListReference

Access of information available in the **dataTable** would use the following index calculation:

(dataEntry OID) 1.3.6.1.4.1.7309.5.2.3.2.1 + (dataListReference) + (componentListReference)

### 4.6.1. Controller information

The Controller Information table provides access to basic controller information, along with providing future development support without the requirement of a new MIB. The table base designed allows for additional data points to be added to the list without the need for additions to the MIB file.

The following table presents the list of common data available from the **controllerInfo** “flat” table.

**Table 4-4** Controller information flat table

OID	Name	Description
1.3.6.1.4.1.7309.5.1.1.0	controllerInfoName	User configurable text name of the controller.
1.3.6.1.4.1.7309.5.1.2.0	controllerInfoDescription	User configurable description of the controller.
1.3.6.1.4.1.7309.5.1.3.0	controllerInfoSoftwareVersion	Software version of the controller application.
1.3.6.1.4.1.7309.5.1.4.0	controllerInfoOperatingSystemVersion	Operating system version number.
1.3.6.1.4.1.7309.5.1.5.0	controllerInfoHardwareVersion	Hardware version number.
1.3.6.1.4.1.7309.5.1.100.1	controllerExtInfoTable	Table for additional controller information.

#### Controller information table

Table Base OID is: 1.3.6.1.4.1.7309.5.1.100.1

The **controllerExtInfoTable** “full” table provides additional controller information that are not part of the “flat” table. The following list shows the base line OID for the row of the table along with description of the data presented in that row.

Table Columns:

- 1. controllerInfoTableIndex
- 2. controllerInfoTableName
- 3. controllerInfoTableStringValue
- 4. controllerInfoTableUnit
- 5. controllerInfoTableNumberValue

**Table 4-5** The controller information full table

Row ID	Name	Description
1	Controller Name	User configurable name of the controller.
2	Controller Description	User configurable description of the controller.
3	Software Version	Software version currently installed on the controller.

**Table 4-5** The controller information full table (continued)

Row ID	Name	Description
4	Site Number	User configurable number of the site.
5	Technical Support Contact Number	Phone number to call for technical support.
6	Contact Name	User configurable data.
7	Contact Number	User configurable data.
8	Configuration File Identifier	User configurable data.
9	Street	User configurable data.
10	City	User configurable data.
11	Zip / Postal Code	User configurable data.
12	Region / State / Province	User configurable data.
13	Country	User configurable data.
14	Latitude	User configurable data.
15	Longitude	User configurable data.
16	Altitude	User configurable data.
17	Serial Number	Serial number of the controller.
18	Part Number	Part number of the controller.
19	Remote Configuration Lockout Status	Current state of the Remote Configuration Lockout.
20	Lockout Override Time Remaining	Time remaining in Remote Configuration Lockout override.
21	Controller Redundancy: Reserve Controller Status	The status of the reserve controller.
22	Controller Redundancy: Reserve Controller Communication Status	The communication status of the reserve controller.
23	Controller Redundancy: Main Controller Status	The status of the main controller.
24	Controller Redundancy: Main Controller Communication Status	The communication status of the main controller.
25	Controller Redundancy: Time of Last Configuration Sync	Last time the configuration synced between the main and reserve controllers.
26	Current Time and Date	Current time and date on the controller.
27	Operating System Version	The operating system version the controller is running.

**Table 4-5** The controller information full table (continued)

Row ID	Name	Description
28	Hardware Version	Version of internal hardware modules.
30	Web Server: Web Server Port	The controller web server port.
31	Web Server: Secure Web Port	The controller secure web server port.
34	Web Server: Web Connection Protocol	The controller web connection protocol.
35	Web Server: Certificate Status	Status of SSLCertificate.
36	Web Server: Certificate Issued To	Name of the entity that the uploaded SSLCertificate is issued to.
37	Web Server: Certificate Issued By	Name of the entity that the uploaded SSLCertificate is issued by.
38	Web Server: Certificate Effective Date	The effective date of the uploaded SSLCertificate.
39	Web Server: Certificate Expiry Date	The expiry date of the uploaded SSLCertificate.
40	Remote Authentication Type	The currently active remote authentication protocol.
41	RADIUS Authentication Server Address	Address of the RADIUS authentication server.
42	RADIUS Authentication Server Port	Port of the RADIUS server.
43	RADIUS Timeout	Timeout setting for the RADIUS server.
44	RADIUS Encryption Protocol	Encryption method used to communicate with the RADIUS server.
45	RADIUS: Group Attribute ID	The RADIUS server attribute ID for specifying user groups.
46	RADIUS: Group Attribute Value for Admin User Role	The RADIUS group attribute value for this role.
47	RADIUS: Group Attribute Value for Accounts User Role	The RADIUS group attribute value for this role.
48	RADIUS: Group Attribute Value for Operator User Role	The RADIUS group attribute value for this role.
49	RADIUS: Group Attribute Value for Restricted Operator User Role	The RADIUS group attribute value for this role.
50	RADIUS: Group Attribute Value for Guest User Role	The RADIUS group attribute value for this role.
51	TACACS+ Authentication Server Address	Address of the TACACS+ authentication server.
52	TACACS+ Authentication Server Port	Port of the TACACS+ server.
53	TACACS+ Timeout	Timeout setting for the TACACS+ server.



**Table 4-5** The controller information full table (continued)

Row ID	Name	Description
54	TACACS+ Encryption Protocol	Encryption method used to communicate with the TACACS+ server.
55	TACACS+: Attribute Name	The TACACS+ server attribute ID for specifying user groups.
56	TACACS+: Group Attribute Value for Admin User Role	The TACACS+ group attribute value for this role.
57	TACACS+: Group Attribute Value for Accounts User Role	The TACACS+ group attribute value for this role.
58	TACACS+: Group Attribute Value for Operator User Role	The TACACS+ group attribute value for this role.
59	TACACS+: Group Attribute Value for Restricted Operator User Role	The TACACS+ group attribute value for this role.
60	TACACS+: Group Attribute Value for Guest User Role	The TACACS+ group attribute value for this role.
70	SNMP Agent	The controller SNMP Agent Enable setting.
71	SNMP Get and Set	The controller SNMP Get and Set setting.
73	UPS MIB System	The UPS MIB capable system setting.
74	SNMPv3 Security	The controller SNMPv3 Enable setting.
75	SNMPv3: Security Name	The SNMPv3 login security name.
78	Read Community 1	The community number name that is used to validate read requests.
79	Write Community 1	The community number name that is used to validate write requests.
80	Read Community 2	The community number name that is used to validate read requests.
81	Write Community 2	The community number name that is used to validate write requests.
82	Read Community 3	The community number name that is used to validate read requests.
83	Write Community 3	The community number name that is used to validate write requests.
84	Read Community 4	The community number name that is used to validate read requests.

**Table 4-5** The controller information full table (continued)

Row ID	Name	Description
85	Write Community 4	The community number name that is used to validate write requests.
86	Read Community 5	The community number name that is used to validate read requests.
87	Write Community 5	The community number name that is used to validate write requests.
88	Read Community 6	The community number name that is used to validate read requests.
89	Write Community 6	The community number name that is used to validate write requests.
90	Read Community 7	The community number name that is used to validate read requests.
91	Write Community 7	The community number name that is used to validate write requests.
92	Read Community 8	The community number name that is used to validate read requests.
93	Write Community 8	The community number name that is used to validate write requests.
94	Read Community 9	The community number name that is used to validate read requests.
95	Write Community 9	The community number name that is used to validate write requests.
96	Read Community 10	The community number name that is used to validate read requests.
97	Write Community 10	The community number name that is used to validate write requests.
10101	User Sessions: User Name 1	The username of the person who is logged in for this session number.
10102	User Sessions: User Role 1	The userrole of the person who is logged in for this session number.
10103	User Sessions: User Client 1	The client type used by the person who is logged in for this session number.
10104	User Sessions: User Address 1	The Ethernet address of the person who is logged in for this session number.

**Table 4-5** The controller information full table (continued)

Row ID	Name	Description
10201	User Sessions: User Name 2	The username of the person who is logged in for this session number.
10202	User Sessions: User Role 2	The userrole of the person who is logged in for this session number.
10203	User Sessions: User Client 2	The client type used by the person who is logged in for this session number.
10204	User Sessions: User Address 2	The Ethernet address of the person who is logged in for this session number.
10301	User Sessions: User Name 3	The username of the person who is logged in for this session number.
10302	User Sessions: User Role 3	The userrole of the person who is logged in for this session number.
10303	User Sessions: User Client 3	The client type used by the person who is logged in for this session number.
10304	User Sessions: User Address 3	The Ethernet address of the person who is logged in for this session number.
10401	User Sessions: User Name 4	The username of the person who is logged in for this session number.
10402	User Sessions: User Role 4	The userrole of the person who is logged in for this session number.
10403	User Sessions: User Client 4	The client type used by the person who is logged in for this session number.
10404	User Sessions: User Address 4	The Ethernet address of the person who is logged in for this session number.
10501	User Sessions: User Name 5	The username of the person who is logged in for this session number.
10502	User Sessions: User Role 5	The userrole of the person who is logged in for this session number.
10503	User Sessions: User Client 5	The client type used by the person who is logged in for this session number.
10504	User Sessions: User Address 5	The Ethernet address of the person who is logged in for this session number.
10601	User Sessions: User Name 6	The username of the person who is logged in for this session number.

**Table 4-5** The controller information full table (continued)

Row ID	Name	Description
10602	User Sessions: User Role 6	The userrole of the person who is logged in for this session number.
10603	User Sessions: User Client 6	The client type used by the person who is logged in for this session number.
10604	User Sessions: User Address 6	The Ethernet address of the person who is logged in for this session number.
10701	User Sessions: User Name 7	The username of the person who is logged in for this session number.
10702	User Sessions: User Role 7	The userrole of the person who is logged in for this session number.
10703	User Sessions: User Client 7	The client type used by the person who is logged in for this session number.
10704	User Sessions: User Address 7	The Ethernet address of the person who is logged in for this session number.
10801	User Sessions: User Name 8	The username of the person who is logged in for this session number.
10802	User Sessions: User Role 8	The userrole of the person who is logged in for this session number.
10803	User Sessions: User Client 8	The client type used by the person who is logged in for this session number.
10804	User Sessions: User Address 8	The Ethernet address of the person who is logged in for this session number.
10901	User Sessions: User Name 9	The username of the person who is logged in for this session number.
10902	User Sessions: User Role 9	The userrole of the person who is logged in for this session number.
10903	User Sessions: User Client 9	The client type used by the person who is logged in for this session number.
10904	User Sessions: User Address 9	The Ethernet address of the person who is logged in for this session number.

To access the desired data, add the column ID and the row index to the end of the base OID of the table:

Base OID (1.3.6.1.4.1.7309.5.1.100.1) + Column ID (2) + Row ID (4)

1.3.6.1.4.1.7309.5.1.100.1.2.4 = "Controller: Site Number"

## 4.6.2. Using the Alpha® Resource MIB

The Alpha® Resource MIB is designed to provide access to all available data from the controller. It has been designed to support future development without needing a new MIB. This MIB is intended for extensive integration with custom monitoring systems, and the data available is equal to what can be seen on the web interface. Because of the dynamic nature of the systems monitored by the controller, the Alpha® Resource MIB tables provide details about accessible data.

The tables with read-only data access are:

- Component List Table
- Data List Table
- Data Table
- Configuration List Table
- Alarm List Table
- Alarm Table
- Alert Table
- Configuration Choice List Table

The table with read-write data access is Configuration Table.

The tables only update during idle periods. After the last component change, an idle period of one minute must occur before an update starts. Adding or removing any component resets the one minute idle timer.

The most effective way to view the data is in table format. The use of table format is dependent on the software being used.

### Component list table

The Component List table displays objects that contain informational fields for data access. It describes objects such as systems, devices and information groupings. For example, for a DC system with ten rectifiers, the table includes a row for the DC system, and a row for each individual rectifier.

One use of the Component List table would be an Inventory listing of available components. Table format is the most effective way to view the information.

The items of the Component List table are numbers for the `componentListSnmpld`, and the `componentListType`. These two numbers are also used in other tables as part of the unique index that identifies a specific table entry.

**componentListType:** Used as part of the DataFieldType table.

**componentListSnmpld:** Used as part of the DataList table.

The column numbers for the Component List table are:

**Table 4-6** Component list

Column number	Name	Description
1	componentListReference	ID value assigned to the component at startup. Configurable for systems only.
2	componentListStaticName	Static name of the component represented by the entry. This text value is not translated for localization.
3	componentListConfiguredName	User configurable name of the component.
4	componentListType	The ComponentListType number is used as part of the data table reference index. Type of component:
		1. Controller
		2. DC System
		3. ADIO
		4. Rectifier
		5. Converter
		6. Inverter
		7. Reserved
		8. T2S
		9. Reserved
		10. Battery System (previously: Battery String)
		11. Disconnect
		12. Load
		13. Shunt
		14. SNMP Destination
		15. CAN Bus
		16. Converter System
		17. User Digital Alarm
		18. User Threshold Alarm
		19. Inverter System
		20. Bypass Switch
		21. Delay Timer
		22. Interval Timer

**Table 4-6** Component list (continued)

Column number	Name	Description
		23. Up Counter
		24. Down Counter
		25. Custom Data
		26. Current Transducer
		27. Breaker/Fuse
		28. Reserved
		29. Email Destination
		30. Auxiliary System
		31. Line Power System
		32. Line Power Module
		33. Line Power Load
		34. Distribution System
		35. Distribution Panel
		36. Distribution Subsystem
		37. Referenced Load
		38. Reserved
		39. Reserved
		40. Scheduled Action
		41. FXM HP UPS System
		42. Disconnect With Exclusion
		43. Change Relay
		44. Change Field
		45. Reserved
		46. Reserved
		47. Reserved
		48. General Purpose Transducer
		49. Change Field To Variable
		50. Battery String

**Table 4-6** Component list (continued)

Column number	Name	Description
		51. Timing Relay
		52. DC Source System
		53. DC Source
		54. Data Subscriptions
		55. Generic Disconnect
		56. AC Source System
		57. AC Source
		58. Reserved
		59. Reserved
		60. Reserved
		61. Scheduled Time Span
		62. Bypass Switch XMBS
		63. FXM HP ADIO
		64. Reserved
		65. Reserved
		66. Reserved
		67. Thermal System
		68. Battery Disconnect with Latching Contactor
		69. Hyperboost Converter
		70. Hyperboost System
		71. Reserved
		72. Reserved
		73. Reserved
		74. AC Generator
		75. DC Generator
		76. Generator Start Equation
		77. Generator Stop Equation
		78. Generator Start / Stop Condition



**Table 4-6** Component list (continued)

Column number	Name	Description
		79. User
		94. Polarium Protocol Bridge
		95. Polarium Battery Module
		96. Polarium Battery System
		97. Matrix C16
		98. Syslog Destination
5	componentListModelNumber	The model number of the component if available.
6	componentListSerialNumber	The serial number of the component if available.
7	componentListSystemPointer	<p>A reference OID within the component table to the encapsulating component to this one. For example, a rectifier component would have a reference OID to the system that it belongs to if it has already been assigned.</p> <p>Using this reference OID with a <b>GetNext</b> operation will return the static name value of the component.</p>

### Data field type list

The Data Field Type list displays the data field types available from their specific component source. Following the previous example of a DC system with ten rectifiers, the table would present a list of available data field types of a DC system and of a rectifier.

This table can provide a list of data field types accessible through SNMP. That information allows for the creation of table indexes to use with the Data Field Type list to get existing live data. Table format is the most effective way to view the information.

The column numbers for the Data Field Type list are:

**Table 4-7** Data field type

Column number	Name	Description
1	dataListReference (IDX)	<p>Static ID value assigned to the field type and is unique within the component that the field belongs to.</p> <p>Indexing of this table is a combination of componentList-Type joined by the internal indexing of the field. Exam-</p>

**Table 4-7** Data field type (continued)

Column number	Name	Description
		<p>ple: Index number 2.1 constitute the type ID (2) followed by the internal index (1).</p> <p>Type ID 2 is the ID for a DC System component. The index then refer to a DC System field that has an internal ID of 1.</p>
2	dataListName	Static name of the data field represented by the entry. This text value is not translated for localization
3	dataListType	<p>Data type of the field represented in the entry:</p> <ul style="list-style-type: none"> <li>• 0. Unknown</li> <li>• 1. Numeric</li> <li>• 2. Boolean</li> <li>• 3. Time</li> <li>• 4. String: Human readable text data.</li> <li>• 5. State: Represents a string value describing the condition the reference object is in. For example, a relay may have the value: <i>StateNotEnergized-Normal</i></li> </ul>
4	dataListUnit	Unit of the value presented by this field.

## Data list

The Data List table displays all available live data that the Cordex® CXC HP controller can report. The data points and referencing are presented in logical groupings.

For example, to get the live data of the **Total Output Current** of a DC system. Use the dataFieldType index and the componentList index to specifically call for an entry in the dataList table.

In the dataFieldType table:

- The **Output Current** of a DC system is indexed as 2.1.
- The instance number of that DC system is 1.

Combine the dataFieldType index (2.1), and the DC system instance number (1), and you can get the index of 2.1.1 which is the reference for the **Output Current** from DC system 1.

The unique key of the data is column 1:

1.3.6.1.4.1.7309.5.2.3.2.1.(1).2.1.1 - the index of the row displaying 2.1.1 for convenient referencing.

The number value is column 2:

1.3.6.1.4.1.7309.5.2.3.2.1.(2).2.1.1 - the number value of the Output Current from DC System 1.

In the table the string value is column 3:

1.3.6.1.4.1.7309.5.2.3.2.1.(3).2.1.1 - would result with a zero-length string since the row entry is representing a number.

The column numbers for the Data List table are:

**Table 4-8** Data list

Column number	Name	Description
1	dataReference	Index combination from the dataTypeList and Component tables to form the unique identifier of the data row.
2	dataNumberValue	Number values will be presented here. Zero-length value will be default in the event no number value is available.
3	dataStringValue	String values will be presented here. Zero-length value will be default in the event no string value is available. "unknown" will be default value until an appropriate data is available.

**Example: Getting the system voltage**

The following example, a simple GET REQUEST for **System Voltage**, and shows the use of the base OID as well as external indexes. The second row of the Component table will show a list of components for the **Rectifier System**.

**Figure 4-10** Table view for the ComponentTable

componentListReference...	componentListStaticName	componentListConfiguredName	compo...	componentLi...	componentL...	componentListSystemPointer
1	DC System 48V	unknown	2	(zero-length)	(zero-length)	0.0
1	CXRC 48V 650W	unknown	4	12345	9578	1.3.6.1.4.1.7309.5.2.1.2.1.2.1
2	CXRC 48V 650W	unknown	4	12345	5627	1.3.6.1.4.1.7309.5.2.1.2.1.2.1
3	CXRC 48V 650W	unknown	4	12345	1314	1.3.6.1.4.1.7309.5.2.1.2.1.2.1
4	CXRC 48V 650W	unknown	4	12345	6014	1.3.6.1.4.1.7309.5.2.1.2.1.2.1
1	CXDF 48V-24V	unknown	5	12349	2080	1.3.6.1.4.1.7309.5.2.1.2.1.16.1
2	CXDF 48V-24V	unknown	5	12349	3774	1.3.6.1.4.1.7309.5.2.1.2.1.16.1
3	CXDF 48V-24V	unknown	5	12349	3744	1.3.6.1.4.1.7309.5.2.1.2.1.16.1
4	CXDF 48V-24V	unknown	5	12349	5573	1.3.6.1.4.1.7309.5.2.1.2.1.16.1
1	Battery String	unknown	10	(zero-length)	(zero-length)	1.3.6.1.4.1.7309.5.2.1.2.1.2.1
1	Disconnect	unknown	11	(zero-length)	(zero-length)	1.3.6.1.4.1.7309.5.2.1.2.1.2.1
1	Load	unknown	12	(zero-length)	(zero-length)	1.3.6.1.4.1.7309.5.2.1.2.1.2.1
1	Shunt	unknown	13	(zero-length)	(zero-length)	1.3.6.1.4.1.7309.5.2.1.2.1.2.1
1	CAN Bus	unknown	15	(zero-length)	(zero-length)	0.0
2	CAN Bus	unknown	15	(zero-length)	(zero-length)	0.0
1	Converter System 48V-2...	unknown	16	(zero-length)	(zero-length)	0.0

Figure 3-11 shows the list of data field types available from the controller and indicates the **System Voltage** as row 2.10.

**Figure 4-11** Table view for the DataListTable

dataListReference(Idx)	dataListName	dataListType	dataListUnit
2.1	DC System 48V/7090: Total Output Current	1	A
2.2	DC System 48V/7090: Total Output Power	1	W
2.3	DC System 48V/7090: Total Capacity Installed - Current	1	A
2.4	DC System 48V/7090: Total Capacity Installed - Power	1	W
2.5	DC System 48V/7090: Average Rectifier Output Voltage	1	V
2.6	DC System 48V/7090: Average Rectifier AC Input Voltage	1	V
2.7	DC System 48V/7090: Average AC Phase 1 Voltage	1	V
2.8	DC System 48V/7090: Average AC Phase 2 Voltage	1	V
2.9	DC System 48V/7090: Average AC Phase 3 Voltage	1	V
2.10	DC System 48V/7090: System Voltage	1	V
2.11	DC System 48V/7090: Total Load Current	1	A
2.12	DC System 48V/7090: Battery Voltage	1	V
2.13	DC System 48V/7090: Battery Current	1	A
2.14	DC System 48V/7090: Battery Temperature	1	B0.43 (hex)
2.15	DC System 48V/7090: System Number	1	(zero-length)
4.1	9578: Bay ID	1	(zero-length)
4.2	9578: Shelf ID	1	(zero-length)
4.3	9578: Slot ID	1	(zero-length)
4.4	9578: AC Input Voltage	1	V
4.5	9578: Output Current	1	A
4.6	9578: Ambient Temperature	1	B0.43 (hex)
4.7	9578: Operating Time	1	h
5.1	2080: Output Current	1	A
5.2	2080: Input Current	1	A
5.3	2080: IntakeTemperature	1	B0.43 (hex)
5.4	2080: Operating Hours	1	h
15.1	CAN1: Number of Devices	1	(zero-length)
15.2	CAN1: Node IDs In Use	1	(zero-length)
16.1	Converter System 48V-24V/3075: Total Output Current	1	A
16.2	Converter System 48V-24V/3075: Total Output Power	1	W
16.3	Converter System 48V-24V/3075: Total Capacity Installed - Cu...	1	A
16.4	Converter System 48V-24V/3075: Total Capacity Installed - Po...	1	W
16.5	Converter System 48V-24V/3075: Average Converter Output ...	1	V
16.6	Converter System 48V-24V/3075: Average Converter Input Vo...	1	V
16.7	Converter System 48V-24V/3075: System Voltage	1	V
16.8	Converter System 48V-24V/3075: Total Load Current	1	A
16.9	Converter System 48V-24V/3075: System Number	1	(zero-length)

Access to the actual **System Voltage** combines the base OID of the DataEntry (row) of the DataTable, the column index of the table, and the instance index value. The instance index is a combination of the dataListReference value (2.10) and the componentListReference (1).

1.3.6.1.4.1.7309.5.2.3.2.1 (dataEntry OID) + 2 (dataNumberValue) + 2.10 (dataListReference) + 1 (componentListReference)

**Figure 4-12** Table view for the DataTable

dataReference	dataNumberValue	dataStringValue
2.1.1	37,920	(zero-length)
2.2.1	2046,000	(zero-length)
2.3.1	125,009	(zero-length)
2.4.1	6000,000	(zero-length)
2.5.1	53,956	(zero-length)
2.6.1	202,456	(zero-length)
2.7.1	0,000	(zero-length)
2.8.1	0,000	(zero-length)
2.9.1	0,000	(zero-length)
2.10.1	54,010	(zero-length)
2.11.1	37,189	(zero-length)
2.12.1	54,010	(zero-length)
2.13.1	0,730	(zero-length)
2.14.1	29,294	(zero-length)
2.15.1	0,000	(zero-length)
3.10101.3	53,912	(zero-length)
3.10201.3	54,011	(zero-length)
3.20101.3	0,190	(zero-length)

The DataTable output shows a list of live data available on the controller. The row with reference 2.10.1, as high lighted in Figure 3-12, shows the **System Voltage** value.

**Figure 4-13** Sample query of system voltage

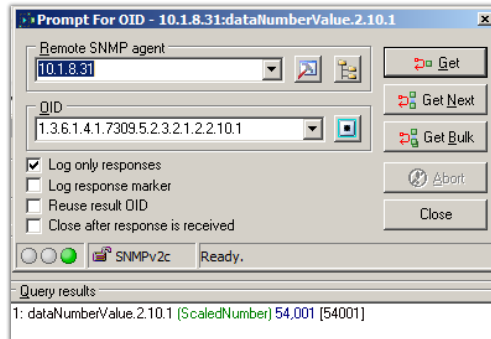


Figure 3-13 shows a simple query of the full OID value, specific to the **System Voltage** of a rectifier system.

### Configuration field type list

The Configuration Field Type list displays the writable data field types available from their specific component source. Following the previous example of a DC system with ten rectifiers, the table would present a list of available data field types of a DC system and of a rectifier.

This table can provide a list of data field types accessible through SNMP. That information allows for the creation of table indexes to use with the Configuration Field Type list to get existing live data and set new data value. Table format is the most effective way to view the information.

The column numbers for the Configuration Field Type list are:

**Table 4-9** Configuration field type

Column number	Name	Description
1	configurationListReference (IDX)	<p>Static ID value assigned to the field type and is unique within the component that the field belongs to.</p> <p>Indexing of this table is a combination of componentList-Type joined by the internal indexing of the field. Example: Index number 2.1 constitute the type ID (2) followed by the internal index (1).</p> <p>Type ID 2 is the ID for a DC System component. The index then refer to a DC System field that has an internal ID of 1.</p>

**Table 4-9** Configuration field type (continued)

Column number	Name	Description
2	configurationListName	Static name of the configuration field represented by the entry. This text value is not translated for localization
3	configurationListType	Data type of the field represented in the entry: <ul style="list-style-type: none"> <li>• 0. Unknown</li> <li>• 1. Numeric</li> <li>• 2. Boolean</li> <li>• 3. Time</li> <li>• 4. String: Human readable text data.</li> <li>• 5. State: State represents a string value describing the condition the reference object is in. For example, a DC System's Voltage Regulation field may have the value: <i>Disabled</i>. A list of state values for each configuration field of data type 5 is available in the <b>Configuration Choice List Table</b>.</li> </ul>
4	configurationListUnit	Unit of the value presented by this field if applicable.

**Example: Setting the float voltage**

The following example, a simple Set REQUEST for **Float Voltage**, and shows the use of the base OID as well as external indexes. The second row of the Component table will show a list of components for the **Rectifier System**.

**Figure 4-14** Table view for the ComponentTable

componentListReference...	componentListStaticName	componentListConfiguredName	compo...	componentLi...	componentL...	componentListSystemPointer
1	DC System 48V	unknown	2	(zero-length)	(zero-length)	0.0
1	CXRC 48V 650W	unknown	4	12345	9578	1.3.6.1.4.1.7309.5.2.1.2.1.2.1
2	CXRC 48V 650W	unknown	4	12345	5627	1.3.6.1.4.1.7309.5.2.1.2.1.2.1
3	CXRC 48V 650W	unknown	4	12345	1314	1.3.6.1.4.1.7309.5.2.1.2.1.2.1
4	CXRC 48V 650W	unknown	4	12345	6014	1.3.6.1.4.1.7309.5.2.1.2.1.2.1
1	CXDF 48V-24V	unknown	5	12349	2080	1.3.6.1.4.1.7309.5.2.1.2.1.16.1
2	CXDF 48V-24V	unknown	5	12349	3774	1.3.6.1.4.1.7309.5.2.1.2.1.16.1
3	CXDF 48V-24V	unknown	5	12349	3744	1.3.6.1.4.1.7309.5.2.1.2.1.16.1
4	CXDF 48V-24V	unknown	5	12349	5573	1.3.6.1.4.1.7309.5.2.1.2.1.16.1
1	Battery String	unknown	10	(zero-length)	(zero-length)	1.3.6.1.4.1.7309.5.2.1.2.1.2.1
1	Disconnect	unknown	11	(zero-length)	(zero-length)	1.3.6.1.4.1.7309.5.2.1.2.1.2.1
1	Load	unknown	12	(zero-length)	(zero-length)	1.3.6.1.4.1.7309.5.2.1.2.1.2.1
1	Shunt	unknown	13	(zero-length)	(zero-length)	1.3.6.1.4.1.7309.5.2.1.2.1.2.1
1	CAN Bus	unknown	15	(zero-length)	(zero-length)	0.0
2	CAN Bus	unknown	15	(zero-length)	(zero-length)	0.0
1	Converter System 48V-2...	unknown	16	(zero-length)	(zero-length)	0.0

The following table shows the list of Configuration field types available from the controller and indicates the **Float Voltage** as row 2.12.

**Figure 4-15** Table view for the ConfigurationListTable

configurationListReference(Idx)	configurationListName	configurationListType	configurationListUnit
2.2	DC System 48V : Description	4	(zero-length)
2.3	DC System 48V : System Number	1	(zero-length)
2.4	DC System 48V : System Serial Number	4	(zero-length)
2.5	DC System 48V : Device ID	1	(zero-length)
2.10	DC System 48V : Rectifier Assignment Rule	5	(zero-length)
2.11	DC System 48V : Nominal Input Voltage	5	(zero-length)
2.12	DC System 48V : Float Voltage	1	V
2.13	DC System 48V : Extended Ranges (Advanced)	5	(zero-length)
2.14	DC System 48V : Minimum Test Voltage	1	V
2.15	DC System 48V : Safe Mode Voltage	1	V
2.16	DC System 48V : Over-Voltage Protection Threshold	1	V
2.17	DC System 48V : System Start Delay	1	s
2.18	DC System 48V : Module Start Delay	1	s
2.19	DC System 48V : Current Limit	1	%
2.20	DC System 48V : Power Limit	1	%
2.21	DC System 48V : CL/PL Alert	5	(zero-length)
2.22	DC System 48V : Ramp Test	5	(zero-length)
2.23	DC System 48V : Voltage Regulation	5	(zero-length)
2.24	DC System 48V : Loadsharing	5	(zero-length)
2.25	DC System 48V : Power Save	5	(zero-length)
2.26	DC System 48V : Module Power for Maximum Efficiency	1	%
2.27	DC System 48V : Rotate One Module Every	1	d
2.28	DC System 48V : Fast Soft-Start	5	(zero-length)

Access to the actual **Float Voltage** combines the base OID of the DataEntry (row) of the ConfigurationTable, the column index of the table, and the instance index value. The instance index is a combination of the configurationListReference value (2.12) and the componentListReference (1).

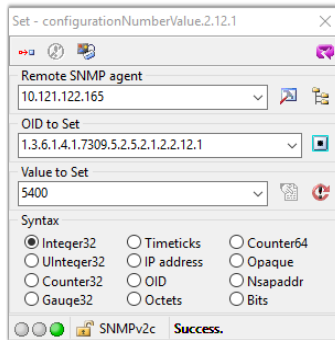
1.3.6.1.4.1.7309.5.2.5.2.1 (configurationEntry OID) + 2 (configurationNumberValue) + 2.12 (configurationListReference) + 1 (componentListReference). The complete OID for **Float Voltage** is 1.3.6.1.4.1.7309.5.2.5.2.1.2.2.12.1

**Figure 4-16** Table view for the configuration table

Instance	configurationReference	configurationNumberValue	configurationStringValue
2.1.1	2.1.1	(zero-length)	unknown
2.2.1	2.2.1	(zero-length)	unknown
2.3.1	2.3.1	0.000	(zero-length)
2.4.1	2.4.1	(zero-length)	unknown
2.5.1	2.5.1	1.000	(zero-length)
2.10.1	2.10.1	(zero-length)	RectifierAssignmentAut...
2.11.1	2.11.1	(zero-length)	InputVoltage208V
2.12.1	2.12.1	54.000	(zero-length)
2.13.1	2.13.1	(zero-length)	ExtendedVoltagesNormal
2.14.1	2.14.1	44.000	(zero-length)
2.15.1	2.15.1	51.400	(zero-length)
2.16.1	2.16.1	58.000	(zero-length)
2.17.1	2.17.1	0.000	(zero-length)
2.18.1	2.18.1	1.000	(zero-length)
2.19.1	2.19.1	100.000	(zero-length)
2.20.1	2.20.1	100.000	(zero-length)

The Configuration Table output shows a list of data available for set request on the controller. The row with reference 2.12.1, as highlighted in the above figure shows the **Float Voltage** value.

**Figure 4-17** Sample set of float voltage



The above figure shows a simple set query of the full OID value, specific to the **Float Voltage** of a rectifier system. The Value to Set is scaled by a 100. 5400 represents 54.00 volts.

### Example: Setting rectifier assignment rule

The following example, a simple Set REQUEST for **Rectifier Assignment Rule** of a DC system, and shows the use of the base OID as well as external indexes. The second row of the ComponentListTable shows a list of components. The **DC System 48V** has a componentListType value of 2.



**Figure 4-18** Table view for the ComponentListTable

componentListReference...	componentListStaticName	componentListConfiguredName	compo...	componentLi...	componentL...	componentListSystemPointer
1	DC System 48V	unknown	2	(zero-length)	(zero-length)	0.0
1	CXRC 48V 650W	unknown	4	12345	9578	1.3.6.1.4.1.7309.5.2.1.2.1.2.1
2	CXRC 48V 650W	unknown	4	12345	5627	1.3.6.1.4.1.7309.5.2.1.2.1.2.1
3	CXRC 48V 650W	unknown	4	12345	1314	1.3.6.1.4.1.7309.5.2.1.2.1.2.1
4	CXRC 48V 650W	unknown	4	12345	6014	1.3.6.1.4.1.7309.5.2.1.2.1.2.1
1	CXDF 48V-24V	unknown	5	12349	2080	1.3.6.1.4.1.7309.5.2.1.2.1.16.1
2	CXDF 48V-24V	unknown	5	12349	3774	1.3.6.1.4.1.7309.5.2.1.2.1.16.1
3	CXDF 48V-24V	unknown	5	12349	3744	1.3.6.1.4.1.7309.5.2.1.2.1.16.1
4	CXDF 48V-24V	unknown	5	12349	5573	1.3.6.1.4.1.7309.5.2.1.2.1.16.1
1	Battery String	unknown	10	(zero-length)	(zero-length)	1.3.6.1.4.1.7309.5.2.1.2.1.2.1
1	Disconnect	unknown	11	(zero-length)	(zero-length)	1.3.6.1.4.1.7309.5.2.1.2.1.2.1
1	Load	unknown	12	(zero-length)	(zero-length)	1.3.6.1.4.1.7309.5.2.1.2.1.2.1
1	Shunt	unknown	13	(zero-length)	(zero-length)	1.3.6.1.4.1.7309.5.2.1.2.1.2.1
1	CAN Bus	unknown	15	(zero-length)	(zero-length)	0.0
2	CAN Bus	unknown	15	(zero-length)	(zero-length)	0.0
1	Converter System 48V-2...	unknown	16	(zero-length)	(zero-length)	0.0

The following table shows the list of Configuration field types available from the controller for a DC system. Note that the configurationListReference for all configuration fields of a DC System has a prefix of 2. The **Rectifier Assignment Rule** is row 2.10.

**Figure 4-19** Table view for the ConfigurationListTable

configurationListReference(IDX)	configurationListName	configurationListType	configurationListUnit
2.2	DC System 48V : Description	4	(zero-length)
2.3	DC System 48V : System Number	1	(zero-length)
2.4	DC System 48V : System Serial Number	4	(zero-length)
2.5	DC System 48V : Device ID	1	(zero-length)
2.10	DC System 48V : Rectifier Assignment Rule	5	(zero-length)
2.11	DC System 48V : Nominal Input Voltage	5	(zero-length)
2.12	DC System 48V : Float Voltage	1	V
2.13	DC System 48V : Extended Ranges (Advanced)	5	(zero-length)
2.14	DC System 48V : Minimum Test Voltage	1	V
2.15	DC System 48V : Safe Mode Voltage	1	V
2.16	DC System 48V : Over-Voltage Protection Threshold	1	V
2.17	DC System 48V : System Start Delay	1	s
2.18	DC System 48V : Module Start Delay	1	s
2.19	DC System 48V : Current Limit	1	%
2.20	DC System 48V : Power Limit	1	%
2.21	DC System 48V : CL/PL Alert	5	(zero-length)
2.22	DC System 48V : Ramp Test	5	(zero-length)
2.23	DC System 48V : Voltage Regulation	5	(zero-length)
2.24	DC System 48V : Loadsharing	5	(zero-length)
2.25	DC System 48V : Power Save	5	(zero-length)
2.26	DC System 48V : Module Power for Maximum Efficiency	1	%
2.27	DC System 48V : Rotate One Module Every	1	d
2.28	DC System 48V : Fast Soft-Start	5	(zero-length)

Access to the actual **Rectifier Assignment Rule** field combines the base OID of the ConfigurationEntry (row) of the ConfigurationTable, the column index of the table, and the instance index value. The instance

index is a combination of the configurationListReference value (2.12) and the componentListReference (1).

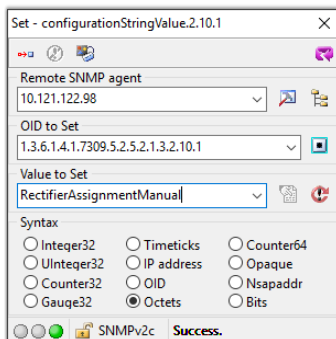
1.3.6.1.4.1.7309.5.2.5.2.1 (configurationEntry OID) + 2 (configurationNumberValue) + 2.10 (configurationListReference) + 1 (componentListReference). The complete OID for **Rectifier Assignment Rule** is 1.3.6.1.4.1.7309.5.2.5.2.1.2.2.10.1

**Figure 4-20** Table view for the configuration table

Instance	configurationReference	configurationNumberValue	configurationStringValue
2.1.1	2.1.1	(zero-length)	48V DC System
2.2.1	2.2.1	(zero-length)	48V DC System for Test Site 10
2.3.1	2.3.1	5.000	(zero-length)
2.4.1	2.4.1	(zero-length)	unknown
2.5.1	2.5.1	1.000	(zero-length)
2.10.1	2.10.1	(zero-length)	RectifierAssignmentAutomatic
2.11.1	2.11.1	(zero-length)	InputVoltage208V
2.12.1	2.12.1	54.000	(zero-length)
2.13.1	2.13.1	(zero-length)	ExtendedVoltagesNormal
2.14.1	2.14.1	44.000	(zero-length)
2.15.1	2.15.1	51.400	(zero-length)
2.16.1	2.16.1	58.000	(zero-length)
2.17.1	2.17.1	0.000	(zero-length)
2.18.1	2.18.1	1.000	(zero-length)

The Configuration Table output shows a list of data available for set request on the controller. The row with reference 2.10.1, as highlighted in the above figure shows the **Rectifier Assignment Rule** value.

**Figure 4-21** Sample set of rectifier assignment rule



The above figure shows a simple set query of the full OID value, specific to the **Rectifier Assignment Rule** of a DC system. The Value to Set is changed to RectifierAssignmentManual.

The valid values of Value to Set for **Rectifier Assignment Rule** of a DC system are RectifierAssignmentManual and RectifierAssignmentAutomatic. These two values are defined in the configurationChoiceListTable.

**Figure 4-22** Table view for the ConfigurationChoiceList table

Instance	configurationChoiceListReference(IDX)	configurationChoiceListIndex	configurationChoiceListName
1.1002101.1	1.1002101	1	PriorityWarning
1.1002101.2	1.1002101	2	PriorityMinor
1.1002101.3	1.1002101	3	PriorityMajor
1.1002101.4	1.1002101	4	PriorityCritical
2.10.0	2.10	0	RectifierAssignmentManual
2.10.1	2.10	1	RectifierAssignmentAutomatic
2.11.0	2.11	0	InputVoltage120V
2.11.1	2.11	1	InputVoltage208V
2.11.2	2.11	2	InputVoltage480V
2.13.0	2.13	0	ExtendedVoltagesNormal
2.13.1	2.13	1	ExtendedVoltagesExtended
2.21.0	2.21	0	Disabled

The column numbers for the Configuration Choice List table are:

**Table 4-10** Configuration choice list

Column number	Name	Description
1	configurationChoiceListReference (IDX)	Static ID value corresponds to the configurationListReference of configuration field.
2	configurationChoiceListIndex	Static number of the configuration choice. For setting Configuration fields with configurationListType = 5, configurationChoiceListName must be used.
3	configurationChoiceListName	Static name for the choice to be used for setting configuration fields with configurationListType = 5. This text value is not translated for localization

### Alarm type list table

The Alarm tables in the Alpha® Resource MIB can be used to poll, to find, and to troubleshoot active alarms.

The Alarm Type List table provides the list of available alarms based on the configuration of the monitored systems. Information provided allows for the creation of table indexes to use with the Alarm table to get existing live alarm information. Table format is the most effective way to view the information.

The column numbers for the **Alarm Type List** table are:

**Table 4-11** Alarm type list

Column number	Name	Description
1	alarmTypeReference	A static and uniquely assigned ID for the alarm type.

**Table 4-11** Alarm type list (continued)

Column number	Name	Description
2	alarmTypeName	Name of the alarm formatted together with the owner of the alarm.

**Figure 4-23** Example: Available alarm type list

alarmTypeReference{IDX}	alarmTypeName
10001	Controller : Clock Error
10003	Controller : ADIO Comms Lost
10004	Controller : Unassigned Modules
20001	DC System 48V : AC Mains Voltage High
20002	DC System 48V : AC Mains Voltage Low
20003	DC System 48V : Urgent AC Mains Fail
20004	DC System 48V : Output Voltage High
20005	DC System 48V : Output Voltage Very High
20006	DC System 48V : Output Voltage Low
20007	DC System 48V : Output Voltage Very Low
20008	DC System 48V : Invalid System Voltage Reading
20009	DC System 48V : Battery On Discharge
20010	DC System 48V : Rectifier Fail
20011	DC System 48V : Rectifier Major Fail Count
20012	DC System 48V : Rectifier Minor Fail Count
20013	DC System 48V : Rectifier Minor
20014	DC System 48V : Rectifier Comms Lost
20015	DC System 48V : AC Mains Fail
20016	DC System 48V : Fan Fail
20017	DC System 48V : Battery Test
20018	DC System 48V : Temp Comp Measurement Fail
20019	DC System 48V : Temp Comp Voltage Warning
20020	DC System 48V : Battery Runtime Low
20021	DC System 48V : Battery Health Low
20022	DC System 48V : Rectifier Configuration Error
35101	L-ADIO : Temperature Sensor #1 Failure
35201	L-ADIO : Temperature Sensor #2 Failure

### Alarm list table

The Alarm table, working together with the Alarm Type List table, and the Component table, allow for active polling of all available alarms in the controller. The value returned provides the state of the alarm, as well as the priority of the alarm.

**Figure 4-24** Example: Available alarm list

Instance	alarmState
1.10001.1	0
1.10003.1	4000
1.10004.1	0
2.20001.1	0
2.20002.1	0
2.20003.1	0
2.20004.1	0
2.20005.1	0
2.20006.1	0
2.20007.1	0
2.20008.1	0
2.20009.1	0
2.20010.1	0
2.20011.1	0
2.20012.1	0
2.20013.1	0
2.20014.1	0
2.20015.1	0
2.20016.1	0

The example provided shows a table that is simplified in data presentation to allow for efficient polling of alarms. Using the base entry OID of the alarmState, together with the instance index, you can actively poll an individual alarm. In this example, an active alarm is polled and then interpreted in the following manner:

1.3.6.1.4.1.7309.5.2.9.2.1.1 (alarm table entry OID) + 1.10003 (alarm type) + 1 (instance Index) =  
1.3.6.1.4.1.7309.5.2.9.2.1.1.10003.1 (OID for ADIO: Comms Lost alarm).

The value returned from a GET REQUEST is an integer value reflective of the priority level as shown in the list below:





- **0** = Normal/Inactive
- **1000** = Warning
- **2000** = Minor
- **3000** = Major
- **4000** = Critical

In most cases, the instance index will be a value of 1 unless there are multiple instances of that alarm. The instance is a reference to the instance of the component alarm source.

## Module alert list table

The Module Alert table shows all active module alerts. The alertTypeName shows the serial number of the module and the name of the active alert. The Instance identifies the component ID, alert ID, and component list reference in the format: componentID.alertID.componentListReference. If the table is empty, it means that there are no active module alerts, or the internal SNMP database is not yet finished building. This MIB entry was added in Cordex® CXC HP controller version 6.00 and MIB version 201904120000Z.

**Figure 4-25** Example: Active alert list

Instance	alertTypeName
 4.40033.1	T000341/1113: DC Output Ramp Test Fail / No Output Power
 4.40033.2	T000340/1113: DC Output Ramp Test Fail / No Output Power
 4.40033.3	T000338/1113: DC Output Ramp Test Fail / No Output Power
 4.40033.4	T000242/0913: DC Output Ramp Test Fail / No Output Power

## Configuration choice list table

The Configuration Choice table shows valid state choices for the configuration data fields in Configuration List table with configurationListType set to 5 (State). These choice names can be used to set the field

value in the Configuration List table. This MIB entry was added in controller version 6.20 and MIB version 201911150000Z.

This table provides a list of data choice values for the field in Configuration List table. That information allows for the creation of table indexes to use with the Configuration Choice List table to get a list of valid choices (states) to set new data value. Table format is the most effective way to view the information.

The column numbers for the Configuration Choice List table are as follows:

**Table 4-12** Configuration choice list

Column number	Name	Description
1	configurationChoiceListReference (IDX)	<p>Static ID value assigned to the field type and is unique within the component that the field belongs to.</p> <p>Indexing of this table is a combination of component-ListType joined by the internal indexing of the field. Example: Index number 2.10 constitute the type ID (2) followed by the internal index (10).</p> <p>Type ID 2 is the ID for a DC System component. The index then refer to a DC System configuration field that has an internal ID of 10.</p> <p>Index number 2.10 represents DC System's Assignment Rule configuration field.</p>
2	configurationChoiceListIndex	Static numeric values of the configuration choice represented by the ConfigurationChoiceList Reference. There an entry of each possible choices.
3	configurationChoiceListName	Static string values of the configuration choice represented by the ConfigurationChoiceList Reference. There an entry of each possible choices. This string value is to be used to set

### 4.6.3. Published SNMP fields

The tables provided here define the **Component** items, and the **Data Field Type** indexing values, when using the **ALPHA-RESOURCE-MIB**. Refer to the section, **Using The Resource MIB** for detailed explanation of the index dependencies of tables within the MIB. Refer to the **SNMP Reference** section for a short explanation of the **Index Calculation** technique.

Specific OIDs are not available for the defined data fields. The dynamic nature of the controller systems do not allow for a static definition of a component reference number. The component reference number is currently not configurable.

The **Data Field** reference IDs are statically assigned and are unique to the **Component**. These numbers, combined with the other dependencies of the Alpha® Resource MIB tables, provide currently published data and future data without the need to change MIB files.



**Notice:** Some of the field names may repeat due to field items that are in repeated groups. Their indexes would remain unique to identify the individual fields. For example, AC input phase fields would have repeating items.

**Table 4-13** Controller SNMP IDs (component type #1)

Field	SNMP ID
Name	1
Description	2
Software Version	3
Site Number	4
Technical Support Contact Number	5
Contact Name	6
Contact Number	7
Configuration File Identifier	8
Street	9
City	10
Zip/Postal Code	11
Region/State/Province	12
Country	13
Latitude	14
Longitude	15
Altitude	16
Serial Number	17
Part Number	18
Remote Configuration Lockout Status	19
Lockout Override Time Remaining	20
Reserved Controller Status	21
Reserved Controller Communication Status	22
Main Controller Status	23

**Table 4-13** Controller SNMP IDs (component type #1) (continued)

Field	SNMP ID
Main Controller Communication Status	24
Time of Last Communication Sync	25
Current Time and Date	26
Operating System Version	27
Hardware Version	28
Web Server Port	30
Secure Web Port	31
Web Connection Protocol	34
Certificate Status	35
Certificate Issued To	36
Certificate Issued By	37
Certificate Effective Date	38
Certificate Expiry Date	39
Remote Authentication Type	40
RADIUS Server Address	41
RADIUS Server Port	42
RADIUS Server Timeout	43
RADIUS Encryption Protocol	44
RADIUS Group Attribute ID	45
RADIUS Attribute Value for Admin Role	46
RADIUS Attribute Value for Accounts Role	47
RADIUS Attribute Value for Operator Role	48
RADIUS Attribute Value for Restricted Operator Role	49
RADIUS Attribute Value for Admin Guest Role	50
TACACS+ Server Address	51
TACACS+ Server Port	52
TACACS+ Server Timeout	53
TACACS+ Encryption Protocol	54
TACACS+ Attribute Name	55



**Table 4-13** Controller SNMP IDs (component type #1) (continued)

Field	SNMP ID
TACACS+ Attribute Value for Admin Role	56
TACACS+ Attribute Value for Accounts Role	57
TACACS+ Attribute Value for Operator Role	58
TACACS+ Attribute Value for Restricted Operator Role	59
TACACS+ Attribute Value for Admin Guest Role	60
RADIUS Additional Authentication Attribute Name	61
RADIUS Additional Authentication Attribute Value	62
SNMP Agent	70
SNMP Get and Set	71
UPS MIB System	73
SNMPv3 Security	74
SNMPv3 Account Name	75
SNMPv3 Authentication Encryption Protocol	76
SNMPv3 Privacy Encryption Protocol	77
Read Community Name 1	78
Write Community Name 1	79
Read Community Name 2	80
Write Community Name 2	81
Read Community Name 3	82
Write Community Name 3	83
Read Community Name 4	84
Write Community Name 4	85
Read Community Name 5	86
Write Community Name 5	87
Read Community Name 6	88
Write Community Name 6	89
Read Community Name 7	90
Write Community Name 7	91
Read Community Name 8	92

**Table 4-13** Controller SNMP IDs (component type #1) (continued)

Field	SNMP ID
Write Community Name 8	93
Read Community Name 9	94
Write Community Name 9	95
Read Community Name 10	96
Write Community Name 10	97
Active Session 1 User Name	10101
Active Session 1 User Role	10102
Active Session 1 Client	10103
Active Session 1 Address	10104
Active Session 2 User Name	10201
Active Session 2 User Role	10202
Active Session 2 Client	10203
Active Session 2 Address	10204
Active Session 3 User Name	10301
Active Session 3 User Role	10302
Active Session 3 Client	10303
Active Session 3 Address	10304
Active Session 4 User Name	10401
Active Session 4 User Role	10402
Active Session 4 Client	10403
Active Session 4 Address	10404
Active Session 5 User Name	10501
Active Session 5 User Role	10502
Active Session 5 Client	10503
Active Session 5 Address	10504
Active Session 6 User Name	10601
Active Session 6 User Role	10602
Active Session 6 Client	10603
Active Session 6 Address	10604

**Table 4-13** Controller SNMP IDs (component type #1) (continued)

Field	SNMP ID
Active Session 7 User Name	10701
Active Session 7 User Role	10702
Active Session 7 Client	10703
Active Session 7 Address	10704
Active Session 8 User Name	10801
Active Session 8 User Role	10802
Active Session 8 Client	10803
Active Session 8 Address	10804
Active Session 9 User Name	10901
Active Session 9 User Role	10902
Active Session 9 Client	10903
Active Session 9 Address	10904

**Table 4-14** DC system SNMP IDs (component type #2)

Field	SNMP ID
Total Output Current	1
Total Output Power	2
Total Capacity Installed - Current	3
Total Capacity Installed - Power	4
Average Rectifier Output Voltage	5
Average Rectifier AC Input Voltage	6
Estimated AC Phase 1 Voltage	7
Estimated AC Phase 2 Voltage	8
Estimated AC Phase 3 Voltage	9
System Voltage	10
Total Load Current	11
Battery Voltage	12
Battery Current	13
Battery Temperature	14

**Table 4-14** DC system SNMP IDs (component type #2) (continued)

Field	SNMP ID
System Number	15
Estimated Required Capacity In Watts	16
Estimated Required Capacity In Amps	17
Estimated Available Capacity In Watts	18
Estimated Available Capacity In Amps	19
Estimated Redundant Capacity In Watts	20
Estimated Redundant Capacity In Amps	21
Estimated Standby Capacity In Watts	22
Estimated Standby Capacity In Amps	23
Average Power	24
Modules Supplying Power	25
Modules In Standby	26
Estimated Capacity Remaining Amps	28
Estimated Capacity Remaining Watts	29
Estimated SOC Percent (Deprecated, always returns 999999999. Use Battery System : Estimated SOC Percent)	30
Estimated Battery Runtime	31
Estimated Battery Health Percent (Deprecated, always returns 999999999. Use Battery System : Estimated Battery Health Percent )	32
Number of Acquired Rectifiers	33
Number of Sourcing Rectifiers	34
Number of Failed Rectifiers	35
Number of Rectifiers with Minor Alerts	36
Number of Rectifiers in Comms Lost	37
Number of Rectifiers in Comms Normal	38
Number of AC Failed Rectifiers	39
Number of Rectifiers with Configuration Error	40
Number of Rectifiers in Power Limit	41
Number of Rectifiers in Current Limit	42
Number of Rectifiers with Fan Fail	43

**Table 4-14** DC system SNMP IDs (component type #2) (continued)

Field	SNMP ID
Number of Rectifiers in Bootloader	44
Maximum Rectifier Ambient Temperature	45

**Table 4-15** Cordex® 8R/8D ADIO SNMP IDs (component type #3)

Field	SNMP ID
Firmware Version	9
D1	40101
D2	40201
D3	40301
D4	40401
D5	40501
D6	40601
D7	40701
D8	40801
K1	50101
K2	50201
K3	50301
K4	50401
K5	50501
K6	50601
K7	50701
K8	50801

**Table 4-16** Cordex® CXC HP L-ADIO SNMP IDs (component type #3)

Field	SNMP ID
Firmware Version	9
V1	10101
V2	10201
V3	10301

**Table 4-16** Cordex® CXC HP L-ADIO SNMP IDs (component type #3) (continued)

Field	SNMP ID
V4	10401
I1	20101
I2	20201
I3	20301
I4	20401
T1	30101
T2	30201
T3	30301
T4	30401
D1	40101
D2	40201
D3	40301
D4	40401
D5	40501
D6	40601
D7	40701
D8	40801
K1	50101
K2	50201
K3	50301
K4	50401
K5	50501
K6	50601
K7	50701
K8	50801
K9	50901
K10	51001
K11	51101
K12	51201

**Table 4-17** Cordex® CXCi HP/M1 ADIO SNMP IDs (component type #3)

Field	SNMP ID
Firmware Version	9
V1	10101
V2	10201
I1	20101
T1	30101
T2	30201
D1	40101
D2	40201
K1	50101
K2	50201
K3	50301
K4	50401

**Table 4-18** Cordex® M1+ ADIO SNMP IDs (component type #3)

Field	SNMP ID
Firmware Version	9
V1	10101
V2	10201
I1	20101
T1	30101
T2	30201
D1	40101
D2	40201
D3	40301
D4	40401
D5	40501
D6	40601
K1	50101
K2	50201

**Table 4-18** Cordex® M1+ ADIO SNMP IDs (component type #3) (continued)

Field	SNMP ID
K3	50301
K4	50401
K5	50501
K6	50601
K7	50701

**Table 4-19** PSU SNMP IDs (component type #3)

Field	SNMP ID
Firmware Version	9
V1	10101
V2	10201
I1	20101
T1	30101
T2	30201
D1	40101
D2	40201
K1	50101
K2	50201
K3	50301
K4	50401
K5	50501

**Table 4-20** Cordex® CXC HP HV-ADIO SNMP IDs (component type #3)

Field	SNMP ID
Absolute Ground Fault Current	1
Firmware Version	9
V1	10101
V2	10201
I1	20101



**Table 4-20** Cordex® CXC HP HV-ADIO SNMP IDs (component type #3) (continued)

Field	SNMP ID
T1	30101
T2	30201
D1	40101
D2	40201
D3	40301
D4	40401
K1	50101
K2	50201
K3	50301
K4	50401
K5	50501
K6	50601
DCCT1	60101
DCCT2	60201

**Table 4-21** Smart BDFB SNMP IDs (component type #3)

Field	SNMP ID
Firmware Versito0ddon	9
V1	10101
V2	10201
V3	10301
V4	10401
V5	10501
V6	10601
V7	10701
V8	10801
I1	20101
I2	20201
I3	20301

**Table 4-21** Smart BDFB SNMP IDs (component type #3) (continued)

Field	SNMP ID
I4	20401
I5	20501
I6	20601
I7	20701
I8	20801
T1	30101
T2	30201
D1	40101
D2	40201
D3	40301
D4	40401
D5	40501
D6	40601
D7	40701
D8	40801
I1 in Amps	60101
I2 in Amps	60201
I3 in Amps	60301
I4 in Amps	60401
I5 in Amps	60501
I6 in Amps	60601
I7 in Amps	60701
I8 in Amps	60801

**Table 4-22** Smart E2 SNMP IDs (component type #3)

Field	SNMP ID
Firmware Version	9
V1	10101
V2	10201

**Table 4-22** Smart E2 SNMP IDs (component type #3) (continued)

Field	SNMP ID
I1	20101
I2	20201
T1	30101
T2	30201
D1	40101
D2	40201
D3	40301
D4	40401
D5	40501
D6	40601
D7	40701
D8	40801
D9	40901
D10	41001
D11	41101
D12	41201
D13	41301
D14	41401
D15	41501
D16	41601
D17	41701
D18	41801
D19	41901
D20	42001
D21	42101
D22	42201
I1 in Amps	60101
I2 in Amps	60201

**Table 4-23** FanTray SNMP IDs (component type #3)

Field	SNMP ID
Firmware Version	9
D1	40101

**Table 4-24** ShuntMux SNMP IDs (component type #3)

Field	SNMP ID
Firmware Version	9
I1	20101
I2	20201
I3	20301
I4	20401
I5	20501
I6	20601
I7	20701
I8	20801
I9	20901
I10	21001
I11	21101
I12	21201
I13	21301
I14	21401
I15	21501
I16	21601

**Table 4-25** Cordex® CXC HP 6i-ADIO SNMP IDs (component type #3)

Field	SNMP ID
Firmware Version	9
I1	20101
I2	20201
I3	20301

**Table 4-25** Cordex® CXC HP 6i-ADIO SNMP IDs (component type #3) (continued)

Field	SNMP ID
I4	20401
I5	20501
I6	20601

**Table 4-26** FlexAir® controller SNMP IDs (component type #3)

Field	SNMP ID
Firmware Version	9
Cooling State	51
Heating State	52
V1	10101
T1	30101
T2	30201
T3	30301
T4	30401
T5	30501
Relay 1	50101
Relay 2	50201
Fan 1 RPM	100101
Fan 2 RPM	100201
Fan 3 RPM	100301
Fan 4 RPM	100401
Fan 5 RPM	100501
Fan 6 RPM	100601
Fan 7 RPM	100701
Fan 8 RPM	100801

**Table 4-27** Smart bypass SNMP IDs (component type #3)

Field	SNMP ID
Firmware Version	9

**Table 4-27** Smart bypass SNMP IDs (component type #3) (continued)

Field	SNMP ID
Ampacity	11
Bypass State	12
Inverter Feed Breaker	13
Utility-Inverter Sync Requested	14
Utility Phase L1 Voltage	110200
Utility Phase L2 Voltage	110201
Utility Phase L3 Voltage	110202
Inverter Phase L1 Voltage	110300
Inverter Phase L2 Voltage	110301
Inverter Phase L3 Voltage	110302
AC Load Phase L1 Voltage	110400
AC Load Phase L2 Voltage	110401
AC Load Phase L3 Voltage	110402
Utility Phase L1 Current	120200
Utility Phase L2 Current	120201
Utility Phase L3 Current	120202
Inverter Phase L1 Current	120300
Inverter Phase L2 Current	120301
Inverter Phase L3 Current	120302
AC Load Phase L1 Current	120400
AC Load Phase L2 Current	120401
AC Load Phase L3 Current	120402

**Table 4-28** Rectifier SNMP IDs (component type #4)

Field	SNMP ID
Bay ID	1
Shelf ID	2
Slot ID	3
AC Input Voltage	4

**Table 4-28** Rectifier SNMP IDs (component type #4) (continued)

Field	SNMP ID
Output Current	5
Ambient Temperature	6
Operating Time	7
Mode	8
Firmware Version	9

**Table 4-29** Converter SNMP IDs (component type #5)

Field	SNMP ID
Output Current	1
Input Current	2
Intake Temperature	3
Operating Hours	4
Firmware Version	9

**Table 4-30** Battery system SNMP IDs (component type #10)

*The componentListStaticName appears as ((BatteryString.XX).YY)*

Field	SNMP ID
Voltage	1
Current	2
Power	3
Active Temperature	4
Minimum Temperature	5
Average Temperature	6
Maximum Temperature	7
Battery Mode; 0 = Unknown, 1 = No Battery, 2 = Battery Disconnected, 3 = Discharging, 5 = Charging, 6 = Test Discharging, 10 = Float, 11 = Equalize, 12 = Boost	8
Charging	9

**Table 4-30** Battery system SNMP IDs (component type #10)  
*The componentListStaticName appears as ((BatteryString.XX).YY)*  
 (continued)

Field	SNMP ID
Time Remaining in EQ	10
Time Remaining in Boost	11
Time Remaining in BT	12
Battery Temperature	13
Battery Capacity Rating	14
Peukert Exponent	15
Elevated Absorption State	16
Time Remaining in Elevated Absorption	17
Estimated State of Charge (SOC)	18
Estimated Battery Runtime	19
Estimated Battery Health	20
Conditioning Mode	21
Battery Test Elapsed Time	22

**Table 4-31** Shunt SNMP IDs (component type #13)

Field	SNMP ID
Current	1

**Table 4-32** SNMP destination SNMP IDs (component type #14)

Field	SNMP ID
Destination Enable	1
Destination IP Address	2
Destination Community	3
Destination Port	4
Notification Timeout	5
Notification Retries	6
Notification Type	7



**Table 4-33** CAN bus SNMP IDs (component type #15)

Field	SNMP ID
Number of Devices	1
Node IDs In Use	2

**Table 4-34** Converter system SNMP IDs (component type #16)

Field	SNMP ID
Total Output Current	1
Total Output Power	2
Total Capacity Installed - Current	3
Total Capacity Installed - Power	4
Average Converter Output Voltage	5
Average Converter Input Voltage	6
System Voltage	7
Total Load Current	8
System Number	9

**Table 4-35** Inverter system SNMP IDs (component type #19)

Field	SNMP ID
Total Output Power	1
Average Output Loading	2
DC Input	3
System Mode	4
Phase 1 Output Power	5
Phase 2 Output Power	6
Phase 3 Output Power	7
Average Output Voltage (Deprecated)	8
DC Input Current	11
DC Input Voltage	12
DC Input Power	13
System On Bypass	14

**Table 4-35** Inverter system SNMP IDs (component type #19) (continued)

Field	SNMP ID
AC Input Power	15
# Communicating Inverters	30
# Failed Inverters	31
# Replace Fan Inverters	35
# Comms Lost Inverters	36
# Comms Lost T2S	37
# T2S Not Accepting Commands	38
# T2S	39
Number Of Phases	50
Number Of DC Input Groups (Feeds)	51
Supported by All T2S	56
Supported by All Inverters	57
Expected DC Input Current in AC Failure	60
Highest Phase Loading (VA)	61
AC Output Power (W)	62
Phase 1 Output Power (W)	63
Phase 2 Output Power (W)	64
Phase 3 Output Power (W)	65
<b>Phase 1</b>	
AC Output Power (VA)	1101
Output Voltage	1102
Output Current	1103
Output Frequency	1104
Loading of Installed Power (VA)	1105
Number Of Inverters On	1106
Loading of Installed Power (W)	1107
Measured DC Input To Output Power Ratio	1108
AC Input Power (W)	1109
AC Input Power (VA)	1110

**Table 4-35** Inverter system SNMP IDs (component type #19) (continued)

Field	SNMP ID
AC Output Power (W)	1111
DC Input Power	1112
Current Number Of Redundant Inverters	1113
Number of Inverters Detected	1114
Number Of Inverters Off	1115
Number Of Inverters Failed	1116
<b>Phase 2</b>	
AC Output Power (VA)	1201
Output Voltage	1202
Output Current	1203
Output Frequency	1204
Loading of Installed Power (VA)	1205
Number Of Inverters On	1206
Loading of Installed Power (W)	1207
Measured DC Input To Output Power Ratio	1208
AC Input Power (W)	1209
AC Input Power (VA)	1210
AC Output Power (W)	1211
DC Input Power	1212
Current Number Of Redundant Inverters	1213
Number of Inverters Detected	1214
Number Of Inverters Off	1215
Number Of Inverters Failed	1216
<b>Phase 3</b>	
AC Output Power (VA)	1301
Output Voltage	1302
Output Current	1303
Output Frequency	1304
Loading of Installed Power (VA)	1305

**Table 4-35** Inverter system SNMP IDs (component type #19) (continued)

Field	SNMP ID
Number Of Inverters On	1306
Loading of Installed Power (W)	1307
Measured DC Input To Output Power Ratio	1308
AC Input Power (W)	1309
AC Input Power (VA)	1310
AC Output Power (W)	1311
DC Input Power	1312
Current Number Of Redundant Inverters	1313
Number of Inverters Detected	1314
Number Of Inverters Off	1315
Number Of Inverters Failed	1316
<b>AC Input Group 1</b>	
Input Voltage	2101
Input Current	2102
Input Frequency	2103
AC Input Power (VA)	2104
Number Of Inverters On	2105
AC Input Power (W)	2106
Number of Inverters Detected	2107
Number Of Inverters Off	2108
Number Of Inverters Failed	2109
<b>AC Input Group 2</b>	
Input Voltage	2201
Input Current	2202
Input Frequency	2203
AC Input Power (VA)	2204
Number Of Inverters On	2205
AC Input Power (W)	2206
Number of Inverters Detected	2207

**Table 4-35** Inverter system SNMP IDs (component type #19) (continued)

Field	SNMP ID
Number Of Inverters Off	2208
Number Of Inverters Failed	2209
<b>AC Input Group 3</b>	
Input Voltage	2301
Input Current	2302
Input Frequency	2303
AC Input Power (VA)	2304
Number Of Inverters On	2305
AC Input Power (W)	2306
Number of Inverters Detected	2307
Number Of Inverters Off	2308
Number Of Inverters Failed	2309
<b>DC Input Group 1</b>	
Input Voltage	3101
Input Current	3102
DC Input Power	3103
Number Of Inverters On	3104
Number Of Inverters Off	3105
Number Of Inverters Failed	3106
Number of Inverters Detected	3107
<b>DC Input Group 2</b>	
Input Voltage	3201
Input Current	3202
DC Input Power	3203
Number Of Inverters On	3204
Number Of Inverters Off	3205
Number Of Inverters Failed	3206
Number of Inverters Detected	3207
<b>DC Input Group 3</b>	

**Table 4-35** Inverter system SNMP IDs (component type #19) (continued)

Field	SNMP ID
Input Voltage	3301
Input Current	3302
DC Input Power	3303
Number Of Inverters On	3304
Number Of Inverters Off	3305
Number Of Inverters Failed	3306
Number of Inverters Detected	3307
<b>DC Input Group 4</b>	
Input Voltage	3401
Input Current	3402
DC Input Power	3403
Number Of Inverters On	3404
Number Of Inverters Off	3405
Number Of Inverters Failed	3406
Number of Inverters Detected	3407

**Table 4-36** Bypass switch SNMP IDs (component type #20)

Field	SNMP ID
Status	1

**Table 4-37** Delay timer SNMP IDs (component type #21)

Field	SNMP ID
Output	1
Delay Time Remaining	2
Trigger	3
Reset	5

**Table 4-38** Interval timer SNMP IDs (component type #22)

Field	SNMP ID
Output	1
Start Event	2
Stop Event	4

**Table 4-39** Up counter SNMP IDs (component type #23)

Field	SNMP ID
Input	1
Output	2
Reset Input	3
Terminal Reached	4

**Table 4-40** Down counter SNMP IDs (component type #24)

Field	SNMP ID
Input	1
Output	2
Initialize Input	3
Counter at Zero	4

**Table 4-41** Custom data SNMP IDs (component type #25)

Field	SNMP ID
Equation	1
Custom Data Status	2
Error Position	3
Error Token	4
Expected Token	5
Result as numeric	6
Result as boolean	7
Result as text	8
Text 1 Priority	100

**Table 4-41** Custom data SNMP IDs (component type #25) (continued)

Field	SNMP ID
Text 2 Priority	110
Text 3 Priority	120
Text 4 Priority	130
Text 5 Priority	140
Text 6 Priority	150

**Table 4-42** CT SNMP IDs (component type #26)

Field	SNMP ID
Current	1

**Table 4-43** Breaker or fuse SNMP IDs (component type #27)

Field	SNMP ID
State	1

**Table 4-44** Line power system SNMP IDs (component type #31)

Field	SNMP ID
Total Output Power	1
Modules	2
Average Input Voltage	3
Total Input Current (Est.)	4
Total Input Power (Est.)	5
Maximum Temperature	6
Loads	7
Channels	8
System Number	9
Total Output Current	10



**Table 4-45** Line power system module SNMP IDs (component type #32)

Field	SNMP ID
Temperature	1
Input Voltage	2
Bay ID	3
Shelf ID	4
Slot ID	5
Firmware Version	9
C1 Output Voltage	80101
C1 Output Current	80102
C2 Output Voltage	80201
C2 Output Current	80202
C3 Output Voltage	80301
C3 Output Current	80302
C4 Output Voltage	80401
C4 Output Current	80402

**Table 4-46** Line power load SNMP IDs (component type #33)

Field	SNMP ID
Channels	1
Channels Enabled	2
Total Channels in Alert	3
Total Output Current	4
Total Output Power	5
Current Capacity	6
Power Capacity	7

**Table 4-47** Distribution system SNMP IDs (component type #34)

Field	SNMP ID
Voltage	1
Current	2

**Table 4-47** Distribution system SNMP IDs (component type #34) (continued)

Field	SNMP ID
Breaker Trips	3
Maximum Temperature	4
Active Alarms	5

**Table 4-48** Distribution panel SNMP IDs (component type #35)

Field	SNMP ID
Voltage	1
Current	2
Active Alarms	3
Overall Breaker Trips	4

**Table 4-49** Distribution subsystem SNMP IDs (component type #36)

Field	SNMP ID
Voltage	1
Current	2
Breaker Trips	3
Maximum Temperature	4
Active Alarms	5

**Table 4-50** Scheduled action SNMP IDs (component type #40)

Field	SNMP ID
Recurrence	1
End	2
Schedule Status	3
Last Run	4
Next Scheduled Run	5
Total Executed Runs	6
Action	7

**Table 4-51** FXM HP system SNMP IDs (component type #41)

Field	SNMP ID
Operating Frequency	1
Nominal AC Voltage	2
Rated Output Power	3
Rated Battery Voltage	4
AC Output Voltage	5
AC Output Frequency	6
AC Output Current	7
AC Output Apparent Power	8
Battery Voltage	9
Battery Current	10
Battery Temperature	11
Elapsed Time on Battery	12
System Mode	13
Inverter Minutes Since Cleared	14
Inverter Count Since Cleared	15
Boost Minutes Since Cleared	16
Boost Count Since Cleared	17
Buck Minutes Since Cleared	18
Buck Count Since Cleared	19
Energy Delivered	20

**Table 4-52** Change relay SNMP IDs (component type #43)

Field	SNMP ID
Condition Value	1
Relay Status	2
Relay Status When Condition is True	3
Relay Status When Condition is False or Unknown	4

**Table 4-53** Change field SNMP IDs (component type #44)

Field	SNMP ID
Condition Value	1
Field Value	2

**Table 4-54** General purpose transducer SNMP IDs (component type #48)

Field	SNMP ID
Calculated Value	1

**Table 4-55** Change field to variable SNMP IDs (component type #49)

Field	SNMP ID
Last Error Condition	1
Field Value	2
Field Range	3
Custom Data Value	4
Time To Next Possible Change	5

**Table 4-56** Battery string SNMP IDs (component type #50)

*The componentListStaticName appears as ((GenericBatteryString.XX).YY)*

Field	SNMP ID
Voltage	1
Current	2
Power	3
Minimum Temperature	4
Average Temperature	5
Maximum Temperature	6
Active Temperature	7
Midpoint Voltage	8
Breaker/Fuse	9

**Table 4-57** DC source system SNMP IDs (component type #52)

Field	SNMP ID
Average Voltage	1
Total Current	2

**Table 4-58** Basic DC source SNMP IDs (component type #53)

Field	SNMP ID
Voltage	1
Current	2
Breaker/Fuse Status	3

**Table 4-59** Legacy DC generator SNMP IDs (component type #53)

Field	SNMP ID
Voltage	1
Current	2
Breaker/Fuse Status	3

**Table 4-60** AC source system SNMP IDs (component type #56)

Field	SNMP ID
Average Phase 1 Voltage	1
Average Phase 2 Voltage	2
Average Phase 3 Voltage	3

**Table 4-61** AC source SNMP IDs (component type #57)

Field	SNMP ID
Number of Phases	1
Phase 1 Voltage	2
Phase 2 Voltage	3
Phase 3 Voltage	4

**Table 4-62** Legacy AC generator SNMP IDs (component type #57)

Field	SNMP ID
Number of Phases	1
Phase 1 Voltage	2
Phase 2 Voltage	3
Phase 3 Voltage	4

**Table 4-63** Bypass switch XMBS SNMP IDs (component type #62)

Field	SNMP ID
Status	1

**Table 4-64** FXM HP ADIO SNMP IDs (component type #63)

Field	SNMP ID
Firmware Version	9
Input 1	20
Input 2	21
Input 3	22
Relay C1	30
Relay C2	31
Relay C3	32
Relay C4	33
Relay C5	34
Relay C6	35
Temperature	40

**Table 4-65** Thermal system SNMP IDs (component type #67)

Field	SNMP ID
Internal Temperature	1
External Temperature	2
System Temperature 1	3
System Temperature 2	4

**Table 4-65** Thermal system SNMP IDs (component type #67) (continued)

Field	SNMP ID
System Temperature 3	5

**Table 4-66** Hyperboost Converter SNMP IDs (component type #69)

Field	SNMP ID
Bay ID	1
Shelf ID	2
Slot ID	3
Firmware Version	9

**Table 4-67** Hyperboost System SNMP IDs (component type #70)

Field	SNMP ID
System Number	1
Battery Bus Voltage	2
Load Bus Voltage	3
Total Battery Bus Current	4
Total Battery Bus Power	5
Total Load Bus Current	6
Total Load Bus Power	7
Average Converter Battery Bus Voltage	8
Average Converter Load Bus Voltage	9
Average Ambient Temperature	10
Total Capacity Installed - Battery Current	11
Total Capacity Installed - Load Current	12
Total Capacity Installed - Power	13
# Acquired Converters	14
# Charging Converters	15
# Discharging Converters	16
# Failed Converters	17
# Minor Alerts Converters	18

**Table 4-67** Hyperboost System SNMP IDs (component type #70) (continued)

Field	SNMP ID
# Comms Lost Converters	19
# Controllable Converters	20
# Converters in Bootloader	21
# Fan Fail Converters	22
# Thermal Shutdown Converters	23
# Temp Sensor Fail Converters	24
# Module Insertion Fail Converters	25
# Battery Over Voltage Protection Converters	26
# Battery Bus LVD Active Converters	27
# Load Bus Over Voltage Protection Converters	28
# Load Bus LVD Active Converters	29
# Calibration Data Corrupted Converters	30
# Configuration Error Converters	31
# Converters with Internal Fault	32
# Battery Fail Converters	33
# Battery Output Current Limit Converters	34
# Load Bus Power Limit Converters	35
# Load Bus Current Limit Converters	36
# Temperature Derating Converters	37
# Ramp Test Failed Converters	38
Battery Voltage	39
Battery Current	40
Battery Temperature	41
Estimated SOC Percent	42
Estimated Battery Runtime	43
Estimated Battery Health Percent	44
Average Distribution Voltage	45
Total Distribution Current	46
Total Distribution Power	47



**Table 4-67** Hyperboost System SNMP IDs (component type #70) (continued)

Field	SNMP ID
Total Distribution Feeder Fuse Rating	48
Total Distribution Utilization	49
# Unused Breakers	50
# Tripped Breakers	51
# On - Not in Inventory Breakers	52
# Normal Breakers	53
# Overloaded Breakers	54

**Table 4-68** AC generator SNMP IDs (component type #74)

Field	SNMP ID
Number of Phases	1
Phase 1 Voltage	2
Phase 2 Voltage	3
Phase 3 Voltage	4
External Status Signal	10
Startups in Time Period	20
Total Startups	21
Total Run Runtime	22
Generator State	40
Generator Runtime	41
Last Generator Command	42

**Table 4-69** DC generator SNMP IDs (component type #75)

Field	SNMP ID
Voltage	1
Current	2
Breaker/Fuse Status	3
External Status Signal	10
Startups in Time Period	20

**Table 4-69** DC generator SNMP IDs (component type #75) (continued)

Field	SNMP ID
Total Startups	21
Total Run Runtime	22
Generator State	40
Generator Runtime	41
Last Generator Command	42

**Table 4-70** Generator start equation SNMP IDs (component type #76)

Field	SNMP ID
Equation	1
Custom Data Status	2
Error Position	3
Error Token	4
Expected Token	5
Result as numeric	6
Result as boolean	7
Start Equation	20
Call to Start	21
Result as Boolean, Stabilized	22

**Table 4-71** Generator stop equation SNMP IDs (component type #77)

Field	SNMP ID
Equation	1
Custom Data Status	2
Error Position	3
Error Token	4
Expected Token	5
Result as numeric	6
Result as boolean	7
Stop Equation	20

**Table 4-71** Generator stop equation SNMP IDs (component type #77) (continued)

Field	SNMP ID
Call to Stop	21
Result as Boolean, Stabilized	22

**Table 4-72** Generator start condition; Generator stop condition SNMP IDs (component type #78)

Field	SNMP ID
Value to Test	1
Test Time Remaining	2
Value	3

**Table 4-73** User SNMP IDs (component type #79)

Field	SNMP ID
Name	1
Description	2
Alias	3
User Role	4

**Table 4-74** Polarium protocol bridge SNMP IDs (component type #94)

Field	SNMP ID
Number of Batteries	2
# Batteries with Charge Blocked	3
# Batteries with Charge Completed	4
Total Battery Current	5
Average State of Charge	6
Average State of Health	7
Total Nominal Capacity	8
Firmware Version	9
Highest Cycle Count	10
Highest Battery Voltage	11

**Table 4-74** Polarium protocol bridge SNMP IDs (component type #94) (continued)

Field	SNMP ID
Lowest Battery Voltage	12
Lowest Float-Charging Voltage	13
Lowest Full-Charging Voltage	14
Highest Charge Current Percentage	15
Highest Temperature	16
Lowest Temperature	17
Lowest State of Health	18

**Table 4-75** Polarium battery module SNMP IDs (component type #95)

Field	SNMP ID
Voltage	1
Current	2
Power	3
Communication Status	5
State of Charge	6
State of Health	7
Cycle Count	8
Active Temperature	9
Minimum Temperature	10
Maximum Temperature	11
Breaker/Fuse	12
Product Name	13
Serial Number	14
Hardware ID	15

**Table 4-76** Polarium battery system SNMP IDs (component type #96)

Field	SNMP ID
Voltage	1
Current	2

**Table 4-76** Polarium battery system SNMP IDs (component type #96) (continued)

Field	SNMP ID
Power	3
Battery Mode 0 = Unknown, 1 = No Battery, 3 = Discharging, 5 = Charging, 10 = Float	4
Battery Capacity Rating	5
Active Temperature	6
Minimum Temperature	7
Maximum Temperature	8
Breaker/Fuse	9

**Table 4-77** Matrix C16 Module SNMP IDs (component type #97)

Field	SNMP ID
Overcurrent Warning Threshold	1
Overcurrent Alert threshold	2
Firmware Version	9
Bus A Voltage	100
Bus A Current	101
Bus A Feeder Fuse Rating	102
Bus B Voltage	200
Bus B Current	201
Bus B Feeder Fuse Rating	202
Breaker A1 State	10101
Breaker A1 Current	10102
Breaker A1 Rating	10103
Breaker A2 State	10201
Breaker A2 Current	10202
Breaker A2 Rating	10203
Breaker A3 State	10301
Breaker A3 Current	10302
Breaker A3 Rating	10303

**Table 4-77** Matrix C16 Module SNMP IDs (component type #97) (continued)

Field	SNMP ID
Breaker A4 State	10401
Breaker A4 Current	10402
Breaker A4 Rating	10403
Breaker A5 State	10501
Breaker A5 Current	10502
Breaker A5 Rating	10503
Breaker A6 State	10601
Breaker A6 Current	10602
Breaker A6 Rating	10603
Breaker A7 State	10701
Breaker A7 Current	10702
Breaker A7 Rating	10703
Breaker A8 State	10801
Breaker A8 Current	10802
Breaker A8 Rating	10803
Breaker B1 State	20101
Breaker B1 Current	20102
Breaker B1 Rating	20103
Breaker B2 State	20201
Breaker B2 Current	20202
Breaker B2 Rating	20203
Breaker B3 State	20301
Breaker B3 Current	20302
Breaker B3 Rating	20303
Breaker B4 State	20401
Breaker B4 Current	20402
Breaker B4 Rating	20403
Breaker B5 State	20501
Breaker B5 Current	20502

**Table 4-77** Matrix C16 Module SNMP IDs (component type #97) (continued)

Field	SNMP ID
Breaker B5 Rating	20503
Breaker B6 State	20601
Breaker B6 Current	20602
Breaker B6 Rating	20603
Breaker B7 State	20701
Breaker B7 Current	20702
Breaker B7 Rating	20703
Breaker B8 State	20801
Breaker B8 Current	20802
Breaker B8 Rating	20803

#### 4.6.4. Published SNMP Get/Set fields

The tables provided here define the **Component** items, and the **Data Field Type** indexing values, when using the **ALPHA-RESOURCE-MIB**. Refer to the section, **Using The Resource MIB** for detailed explanation of the index dependencies of tables within the MIB. Refer to the **SNMP Reference** section for a short explanation of the **Index Calculation** technique.

Specific OIDs are not available for the defined data fields. The dynamic nature of controller systems do not allow for a static definition of a component reference number. The component reference number is currently not configurable.

The **Data Field** reference IDs are statically assigned and are unique to the **Component**. These numbers, combined with the other dependencies of the Alpha® Resource MIB tables, provide currently published data and future data without the need to change MIB files.



**Notice:** Some of the field names may repeat due to field items that are in repeated groups. Their indexes would remain unique to identify the individual fields. For example, AC input phase fields would have repeating items.

**Table 4-78** Controller SNMP IDs (component type #1)

Field	SNMP ID
Name	1
Description	2
Site Number	10

**Table 4-78** Controller SNMP IDs (component type #1) (continued)

Field	SNMP ID
Technical Support Number	11
Contact Name	12
Contact Number	13
Street	14
City	15
Zip/Postal Code	16
Region/State/Province	17
Country	18
Latitude	19
Longitude	20
Altitude	21
Time Zone	22
Daylight Saving Method	23
Remote Configuration Lockout Enable	24
Lockout Override Time	25
On Alarm Cut-Off Button Press	26
Alarm Cut-Off Period	27
Alarm Activation Delay at Startup	28
Speaker Enable	29
Time Server IP Address	30
Default Login Language	31
Shelf Layout Order	32
Name Customization	33
Power Flow Configuration Suggestions	34
Visibility of User Strings	35
LCD Dashboard Option	36
LCD Timeout	37
Require Login for Sensitive Information	38
Screen Rotation Angle	39



**Table 4-78** Controller SNMP IDs (component type #1) (continued)

Field	SNMP ID
USB Maintenance Actions	40
Append a Date String to Filenames	41
Add the Controller Name to Filenames	42
System Summary Option	43
LCD Dashboard Text Size	50
LCD Dashboard Text Alignment	51
Configuration File Identifier	52
Web Server Custom Port	53
Secure Web Server Custom Port	54
Web Connection Protocol	55
USB Port	56
Syslog Agent	57
Facility Value	58
Inhibit Alarm Summary Relays During Maintenance	60
SNMP Synchronize Alarm Parameters	70
SNMP V3 Authentication Protocol	71
SNMP V3 Privacy Protocol	72
SNMP V3 Security Name	73
Modbus Agent	80
Modbus Byte Order	81
Modbus Limited Data Set Device ID	82
Modbus Internet Protocol	83
Email Client Enable	90
SMTP Server Address	91
SMTP Server Port	92
SNMP Client Domain Name	93
SMTP Server User Name	94
Configuration Restore Points Enable	100

**Table 4-79** DC system SNMP IDs (component type #2)

Field	SNMP ID
Name	1
Description	2
System Number	3
System Serial Number	4
System Modbus Device ID	5
Rectifier Assignment Rule	10
Nominal Input Voltage	11
System Float Voltage	12
Extended Ranges (Advanced)	13
Rectifier Minimum Test Voltage	14
Rectifier Safe Mode Voltage	15
Rectifier Over-Voltage Protection Threshold	16
Rectifier System Start Delay	17
Rectifier Module Start Delay	18
Rectifier Current Limit	19
Rectifier Power Limit	20
Rectifier CL/PL Alert	21
Rectifier Ramp Test	22
Voltage Regulation Enable	23
Loadsharing Enable	24
Power Save Enable	25
Module Power for Maximum Efficiency	26
Rotate One Module Period	27
Rectifier Fast Soft-Start	28
Rectifier High Voltage Alert Threshold (deprecated)	29
Alert Masking Policy	30

**Table 4-80** ADIO SNMP IDs (component type #3)

Field	SNMP ID
Name	1
Description	2

**Table 4-81** FlexAir® controller SNMP IDs (component type #3)

Field	SNMP ID
Name	1
Description	2
Fan 1 Replacement Date	10
Fan 2 Replacement Date	11
Fan 3 Replacement Date	12
Fan 4 Replacement Date	13
Fan 5 Replacement Date	14
Fan 6 Replacement Date	15
Fan 7 Replacement Date	16
Fan 8 Replacement Date	17

**Table 4-82** Rectifier SNMP IDs (component type #4)

Field	SNMP ID
Rectifier Phase	10

**Table 4-83** T2S SNMP IDs (component type #8)

Field	SNMP ID
Name	1
Description	2

**Table 4-84** Battery system SNMP IDs (component type #10)

Field	SNMP ID
Name	1
Description	2

**Table 4-84** Battery system SNMP IDs (component type #10) (continued)

Field	SNMP ID
Number of Cells per String	10
Charging Threshold Override	11
Discharging Threshold Override	12
Hysteresis Override	13
Equalize Duration	14
Equalize Voltage	15
Boost Duration	16
Boost Voltage	17
Battery Test Termination Voltage	18
Battery Test Timeout	19
Battery Test Termination on SOC Enable	20
Battery Test Termination SOC	21
Auto Battery Test Interval Between Tests	22
Auto Battery Test Start Hour	23
Auto Battery Test Days to Retry Failed Test	24
Remote Battery Test Enable	25
Temperature Compensation in Float Enable	26
Temperature Compensation in Equalize Enable	27
Temperature Compensation in Absorption Enable	28
Temperature Compensation Slope	29
Minimum Voltage Breakpoint	30
Maximum Voltage Breakpoint	31
Charge Current Control Enable	32
Charge Current Limit (C/X)	33
Battery Estimation Enable	34
Load Model	35
Elevated Absorption Charging Enable	36
Elevated Absorption Arming Threshold	37
Elevated Absorption Voltage	38

**Table 4-84** Battery system SNMP IDs (component type #10) (continued)

Field	SNMP ID
Elevated Absorption Termination Threshold	39
Elevated Absorption Timeout	40

**Table 4-85** Disconnect SNMP IDs (component type #11)

Field	SNMP ID
Name	1
Description	2
Disconnect Enable	10
Disconnect Threshold	11
Connect Threshold	12
Disconnect On Time after AC Fail	13
Time After AC Fail Disconnect Threshold	14
Disconnect on Battery State of Charge	15
State of Charge Disconnect Threshold	16

**Table 4-86** Load SNMP IDs (component type #12)

Field	SNMP ID
Name	1
Description	2

**Table 4-87** Shunt SNMP IDs (component type #13)

Field	SNMP ID
Name	1
Description	2
Range in Amps	10
Range in Millivolts	11
Offset	12

**Table 4-88** SNMP destination SNMP IDs (component type #14)

Field	SNMP ID
Name	1
Description	2
Destination Enable	10
IP Address	11
Community	12
Port	13
Notification Timeout	14
Notification Retries	15

**Table 4-89** CAN bus SNMP IDs (component type #15)

Field	SNMP ID
Name	1
Description	2
Bus Enable	10

**Table 4-90** Converter system SNMP IDs (component type #16)

Field	SNMP ID
Name	1
Description	2
System Number	3
System Serial Number	4
Assignment Rule	10
Converter Output Voltage	11
Converter Input Voltage Shutdown	12
Converter Input Voltage Restart	13
Converter Over-voltage Protection	14
Converter System Start Delay	15
Converter Current Limit Alert	16

**Table 4-91** Digital user alarm SNMP IDs (component type #17)

Field	SNMP ID
Name	1
Description	2

**Table 4-92** Threshold user alarm SNMP IDs (component type #18)

Field	SNMP ID
Name	1
Description	2
Alarm When Value	10

**Table 4-93** Inverter system SNMP IDs (component type #19)

Field	SNMP ID
Name	1
Description	2
System Number	3
System Serial Number	4
System Modbus Device ID	5
Assignment Rule	10
Commissioning Method	11
Number of Shelves Per Phase	12
Manual DC Mode Enable	13
Desired DC Input	14
AC Input Power Limit Enable	15
AC Input Power Limit	16
DC Input Voltage Low Limit	17
DC Input Voltage Restart Limit	18

**Table 4-94** Bypass switch SNMP IDs (component type #20)

Field	SNMP ID
Name	1

**Table 4-94** Bypass switch SNMP IDs (component type #20) (continued)

Field	SNMP ID
Description	2

**Table 4-95** Delay timer SNMP IDs (component type #21)

Field	SNMP ID
Name	1
Description	2
Delay	10
Auto Reset	11
Output True When	12
Retriggerable	13

**Table 4-96** Interval timer SNMP IDs (component type #22)

Field	SNMP ID
Name	1
Description	2

**Table 4-97** Up counter SNMP IDs (component type #23)

Field	SNMP ID
Name	1
Description	2
Terminal Value	3
Persist Counter Value Through Restart	4

**Table 4-98** Down counter SNMP IDs (component type #24)

Field	SNMP ID
Name	1
Description	2
Initial Value	3
Persist Counter Value Through Restart	4



**Table 4-99** Custom data SNMP IDs (component type #25)

Field	SNMP ID
Name	1
Description	2
Equation	10
Text 1 Name	100
Text 1 Logic	101
Text 1 Limit	102
Text 2 Name	110
Text 2 Logic	111
Text 2 Limit	112
Text 3 Name	120
Text 3 Logic	121
Text 3 Limit	122
Text 4 Name	130
Text 4 Logic	131
Text 4 Limit	132
Text 5 Name	140
Text 5 Logic	141
Text 5 Limit	142
Text 6 Name	150
Text 6 Logic	151
Text 6 Limit	152

**Table 4-100** CT SNMP IDs (component type #26)

Field	SNMP ID
Name	1
Description	2
Range In Amp	10
Range In Volt	11
Offset	12

**Table 4-101** Breaker fuse SNMP IDs (component type #27)

Field	SNMP ID
Name	1
Description	2
Usage	10
Size	11
AWG	12
Destination	13

**Table 4-102** Email destination SNMP IDs (component type #29)

Field	SNMP ID
Name	1
Description	2
From Address	10
To Address	11
Send Interval	12

**Table 4-103** Auxiliary system SNMP IDs (component type #30)

Field	SNMP ID
Name	1
Description	2

**Table 4-104** Line power system SNMP IDs (component type #31)

Field	SNMP ID
Name	1
Description	2
System Number	3
System Serial Number	4
Assignment Rule	10
Input Voltage Low Shutdown	11
Input Voltage Low Restart	12

**Table 4-104** Line power system SNMP IDs (component type #31) (continued)

Field	SNMP ID
Primary Output Display	13
Channel Shutdown Alarm Group Enable	14
Channel Shutdown Alarm Group Priority	15
Channel Shutdown Alarm Group Parameter 1	16
Channel Shutdown Alarm Group Parameter 2	17
Module Failure Alarm Group Enable	18
Module Failure Alarm Group Priority	19
Module Failure Alarm Group Parameter 1	20
Module Failure Alarm Group Parameter 2	21

**Table 4-105** Line power load SNMP IDs (component type #33)

Field	SNMP ID
Name	1
Description	2
Downstream Loads	11

**Table 4-106** Distribution system SNMP IDs (component type #34)

Field	SNMP ID
Name	1
Description	2
System Number	3
System Serial Number	4

**Table 4-107** Distribution panel SNMP IDs (component type #35)

Field	SNMP ID
Name	1
Description	2
Fuse Number	10
Fuse Size	11

**Table 4-107** Distribution panel SNMP IDs (component type #35) (continued)

Field	SNMP ID
Fuse Max Amperage	12

**Table 4-108** Distribution subsystem SNMP IDs (component type #36)

Field	SNMP ID
Name	1
Description	2
Serial Number	4

**Table 4-109** Reference load SNMP IDs (component type #37)

Field	SNMP ID
Name	1
Description	2

**Table 4-110** Scheduled action SNMP IDs (component type #40)

Field	SNMP ID
Name	1
Description	2

**Table 4-111** FXM HP system SNMP IDs (component type #41)

Field	SNMP ID
Name	1
Description	2
System Number	3
System Serial Number	4
Low Battery Threshold	10
Power Outage Alarm Delay	11
AC Input Qualification (Re-transfer) Time	12
AC Input Sense	13
Automatic Voltage Regulation	14

**Table 4-111** FXM HP system SNMP IDs (component type #41) (continued)

Field	SNMP ID
AVR Disabled AC Input High Limit	15
AVR Disabled AC Input Low Limit	16
System Float Voltage	17
Green LED	18
AC Output Shutdown Operation	19
AC Output Shutdown Auto On Delay	20
External Fan On Temperature	21
External Fan Off Hysteresis	22
AC Output Upper Disconnect Voltage	23
AC Output Lower Disconnect Voltage	24
Maximum Time On Inverter Enable	25
Maximum Time On Inverter	26
Inverter Shutdown Voltage	27
Inverter Manual Start Up Voltage	28
Keep Alive Enable	29
Keep Alive Startup Delay	30
Keep Alive Destination IP Address	31
Keep Alive Protocol Timeout	32
Keep Alive Protocol Interval	33
Keep Alive Maximum Protocol Retries	34
Keep Alive Action Duration	35
Keep Alive Maximum Action Retries	36
Keep Alive Failure Restart Delay	37
Keep Alive Protocol	38
Keep Alive Protocol TCP Port	39
Keep Alive Fail Action	40
Start Up Option After Triggered Shutdown	41
Auto Start Up Delay After Triggered Shutdown	42

**Table 4-112** Disconnect with time of day SNMP IDs (component type #42)

Field	SNMP ID
Name	1
Description	2
Disconnect Enable	10
Delay	11

**Table 4-113** Change relay SNMP IDs (component type #43)

Field	SNMP ID
Name	1
Description	2

**Table 4-114** Change field SNMP IDs (component type #44)

Field	SNMP ID
Name	1
Description	2
Field Value When Condition True	10
Field Value When Condition False	11

**Table 4-115** General purpose transducer SNMP IDs (component type #48)

Field	SNMP ID
Name	1
Description	2
Minimum Input Voltage	10
Maximum Input Voltage	11
Minimum Output Voltage	12
Maximum Output Voltage	13
Output Offset	14

**Table 4-116** Change field to variable SNMP IDs (component type #49)

Field	SNMP ID
Name	1
Description	2
Field Value Change Interval	10

**Table 4-117** Battery string SNMP IDs (component type #50)

Field	SNMP ID
Name	1
Description	2
Capacity Rating	10
Open Circuit Voltage	11
Peukert Exponent	12
Recommended Float Voltage (Deprecated)	14
Recommended Equalize Voltage (Deprecated)	15
Recommended Temperature Compensation Slope (Deprecated)	16
Recommended Charge Current Max (Deprecated)	17

**Table 4-118** Timing relay SNMP IDs (component type #51)

Field	SNMP ID
Name	1
Description	2
Relay Enable	10
Relay Activation Delay	11

**Table 4-119** DC source system SNMP IDs (component type #52)

Field	SNMP ID
Name	1
Description	2

**Table 4-120** Basic DC source SNMP IDs (component type #53)

Field	SNMP ID
Name	1
Description	2

**Table 4-121** Legacy DC generator SNMP IDs (component type #53)

Field	SNMP ID
Name	1
Description	2
Generator Control Enable	10
Start Voltage Threshold	11
Stop Voltage Threshold	12
Minimum Runtime	13
Maximum Runtime	14
Start Condition 1 Name	20
Start Condition 1 Enable	21
Start Condition 1 Logic	22
Start Condition 1 Limit	23
Stop Condition 1 Name	30
Stop Condition 1 Enable	31
Stop Condition 1 Logic	32
Stop Condition 1 Limit	33
Start Condition 2 Name	40
Start Condition 2 Enable	41
Start Condition 2 Logic	42
Start Condition 2 Limit	43
Stop Condition 2 Name	50
Stop Condition 2 Enable	51
Stop Condition 2 Logic	52
Stop Condition 2 Limit	53
Start Condition 3 Name	60



**Table 4-121** Legacy DC generator SNMP IDs (component type #53) (continued)

Field	SNMP ID
Start Condition 3 Enable	61
Start Condition 3 Logic	62
Start Condition 3 Limit	63
Stop Condition 3 Name	70
Stop Condition 3 Enable	71
Stop Condition 3 Logic	72
Stop Condition 3 Limit	73

**Table 4-122** Data subscription SNMP IDs (component type #54)

Field	SNMP ID
Name	1
Description	2
IP Address	10

**Table 4-123** Generic disconnect SNMP IDs (component type #55)

Field	SNMP ID
Name	1
Description	2
Disconnect Enable	10
Voltage Disconnect Threshold	11
Voltage Connect Threshold	12
Allow Disconnect During Battery Test	13
Require AC Input For Reconnect	14
Required Time to Stay Disconnected	15
Disconnect Condition 1 Name	20
Disconnect Condition 1 Enable	21
Disconnect Condition 1 Logic	22
Disconnect Condition 1 Limit	23
Reconnect Condition 1 Name	30

**Table 4-123** Generic disconnect SNMP IDs (component type #55) (continued)

Field	SNMP ID
Reconnect Condition 1 Enable	31
Reconnect Condition 1 Logic	32
Reconnect Condition 1 Limit	33
Disconnect Condition 2 Name	40
Disconnect Condition 2 Enable	41
Disconnect Condition 2 Logic	42
Disconnect Condition 2 Limit	43
Reconnect Condition 2 Name	50
Reconnect Condition 2 Enable	51
Reconnect Condition 2 Logic	52
Reconnect Condition 2 Limit	53
Disconnect Condition 3 Name	60
Disconnect Condition 3 Enable	61
Disconnect Condition 3 Logic	62
Disconnect Condition 3 Limit	63
Reconnect Condition 3 Name	70
Reconnect Condition 3 Enable	71
Reconnect Condition 3 Logic	72
Reconnect Condition 3 Limit	73

**Table 4-124** AC source system SNMP IDs (component type #56)

Field	SNMP ID
Name	1
Description	2

**Table 4-125** AC source SNMP IDs (component type #57)

Field	SNMP ID
Name	1
Description	2

**Table 4-126** Legacy AC generator SNMP IDs (component type #57)

Field	SNMP ID
Name	1
Description	2
Generator Control Enable	10
Start Voltage Threshold	11
Stop Voltage Threshold	12
Minimum Runtime	13
Maximum Runtime	14
Start Condition 1 Name	20
Start Condition 1 Enable	21
Start Condition 1 Logic	22
Start Condition 1 Limit	23
Stop Condition 1 Name	30
Stop Condition 1 Enable	31
Stop Condition 1 Logic	32
Stop Condition 1 Limit	33
Start Condition 2 Name	40
Start Condition 2 Enable	41
Start Condition 2 Logic	42
Start Condition 2 Limit	43
Stop Condition 2 Name	50
Stop Condition 2 Enable	51
Stop Condition 2 Logic	52
Stop Condition 2 Limit	53
Start Condition 3 Name	60
Start Condition 3 Enable	61
Start Condition 3 Logic	62
Start Condition 3 Limit	63
Stop Condition 3 Name	70
Stop Condition 3 Enable	71

**Table 4-126** Legacy AC generator SNMP IDs (component type #57) (continued)

Field	SNMP ID
Stop Condition 3 Logic	72
Stop Condition 3 Limit	73

**Table 4-127** Scheduled time span SNMP IDs (component type #61)

Field	SNMP ID
Name	1
Description	2
Days to Run	10
Start Time	11
End Time	12

**Table 4-128** Bypass switch XMBS SNMP IDs (component type #62)

Field	SNMP ID
Name	1
Description	2

**Table 4-129** Thermal system SNMP IDs (component type #67)

Field	SNMP ID
Name	1
Description	2
Thermal Controller Assignment Rule	10
Filter Replacement Date	11
Internal Temperature Name	100
External Temperature Name	101
System Temperature 1 Name	102
System Temperature 2 Name	103
System Temperature 3 Name	104

**Table 4-130** Battery disconnect with latching contactor SNMP IDs (component type #68)

Field	SNMP ID
Name	1
Description	2
Disconnect Enable	10
Voltage Disconnect Threshold	11
Voltage Connect Threshold	12

**Table 4-131** Hyperboost Converter SNMP IDs (component type #69)

Field	SNMP ID
Name	1
Description	2

**Table 4-132** Hyperboost System SNMP IDs (component type #70)

Field	SNMP ID
Name	1
Description	2
System Number	3
System Serial Number	4
Converter Assignment Rule	10
Primary Output Display	11
Battery Over-Voltage Protection Limit	12
Battery Safe Voltage	13
Battery Low Disconnect Voltage	14
Battery Fail Voltage	15
Battery Safe Charging Current	16
Load Bus Over-Voltage Protection Limit	17
Load Bus Output Voltage	18
Load Bus Safety Startup Voltage	19
Load Bus Ramp Test	20
Battery Bus Float Voltage	21

**Table 4-133** AC generator SNMP IDs (component type #74)

Field	SNMP ID
Name	1
Description	2
Generator Control Enable	10
Minimum Runtime	11
Equation Stability Delay	20
Statistics Time Period	30

**Table 4-134** DC generator SNMP IDs (component type #75)

Field	SNMP ID
Name	1
Description	2
Generator Control	10
Minimum Runtime	11
Equation Stability Delay	20
Statistics Time Period	30

**Table 4-135** Generator start equation SNMP IDs (component type #76)

Field	SNMP ID
Name	1
Description	2
Equation	10
Start Logic	20

**Table 4-136** Generator stop equation SNMP IDs (component type #77)

Field	SNMP ID
Name	1
Description	2
Equation	10
Stop Logic	20

**Table 4-137** Generator start condition; Generator stop condition SNMP IDs (component type #78)

Field	SNMP ID
Name	1
Description	2
Enable	10
True If	11
Limit	12

**Table 4-138** Polarium protocol bridge SNMP IDs (component type #94)

Field	SNMP ID
Name	1
Description	2

**Table 4-139** Polarium battery module SNMP IDs (component type #95)

Field	SNMP ID
Name	1
Description	2

**Table 4-140** Polarium battery system SNMP IDs (component type #96)

Field	SNMP ID
Name	1
Description	2
Charging Threshold Override	11
Discharging Threshold Override	12
Hysteresis Override	13

**Table 4-141** Matrix C16 Module SNMP IDs (component type #97)

Field	SNMP ID
Name	1
Description	2

**Table 4-141** Matrix C16 Module SNMP IDs (component type #97) (continued)

Field	SNMP ID
Breaker A1 Name	3
Breaker A2 Name	4
Breaker A3 Name	5
Breaker A4 Name	6
Breaker A5 Name	7
Breaker A6 Name	8
Breaker A7 Name	9
Breaker A8 Name	10
Breaker B1 Name	11
Breaker B2 Name	12
Breaker B3 Name	13
Breaker B4 Name	14
Breaker B5 Name	15
Breaker B6 Name	16
Breaker B7 Name	17
Breaker B8 Name	18

**Table 4-142** Syslog Destination SNMP IDs (component type #98)

Field	SNMP ID
Name	1
Description	2
Destination Enable	10
Server IP Address	11
Server Port	12
Server Transport Protocol	13
Server RFC Version	14



## 4.7. Differences between SNMP versions

### SNMPv1

SNMPv1 was the first development of the SNMP protocol supporting five core Protocol Data Units (PDUs): GET request, SET request, GETNEXT request, RESPONSE, and TRAP. With limited security, SNMPv1 provides the basic form of communication over SNMP.

SNMPv1 use TRAPs as its form of notification to report activities occurring in the Agent to any defined NMS. The v1 TRAPs are unsecured and limited in use, usually restricted to TRAPs like device startup, device shutdown, linkup, and linkdown.

A description can be found in Request for Comments 1157 (RFC-1157) document.

### SNMPv2

In addition to the Protocol Data Units (PDU) supported by SNMPv1, SNMPv2 supports two additional PDUs: GETBULK request and INFORM request.

A description can be found in RFC 1901.

Four variations of SNMPv2 were defined to handle different security:

- Original SNMPv2 (SNMPv2p)
- Community-based SNMPv2 (SNMPv2c)
- User-based SNMPv2 (SNMPv2u)
- SNMPv2 star (SNMPv2\*)

The controller supports the community-based variation (SNMPv2c).

The word TRAP refers to SNMPv1 TRAPs, an unsolicited reporting protocol to report events occurring in the agent.

SNMPv2 does not define the same set of TRAPs, like startup, and uses a new data format for reporting events. This new format is referred to as a NOTIFICATION.

INFORM type NOTIFICATIONS are supported in SNMPv2. INFORMS are acknowledged form of TRAPs providing a higher level of integrity to the reporting of an event.

The controller supports SNMPv2c NOTIFICATIONS and GET requests, which are compatible SNMPv1 GET requests as well as limited compatibility with SNMPv1 TRAPs.

RFC 1908 covers compatibility between SNMPv1 and SNMPv2.

The following table summarizes the difference between an SNMPv1 TRAP and an SNMPv2 NOTIFICATION.

**Table 4-143** SNMPv1 traps versus SNMPv2 notification

SNMPv1 trap	SNMPv2 notification
Contains the agent address	Does not contain the agent address.
Has information about the specific TRAP and generic TRAP information	Has the TRAP OID in the second varbind.
Does not have an error index and status	Has an error index and status.
Does not support confirmed/acknowledged TRAPs	Supports confirmed/acknowledged NOTIFICATIONS.

Another difference in an SNMPv1 NMS, is the way it performs a MIB WALK. When doing a WALK with an SNMPv1 NMS tool, it is necessary to filter out empty values that show up in a sparsely populated area of a MIB.

### SNMPv3

SNMPv3 was developed to significantly improve security. SNMPv3 includes a requirement to login or authenticate. The password of the user account "admin" or a security name is used as authentication key or encryption key to secure the SNMPv3 connection. In addition, Authentication Encryption Protocol (MD5 or SHA) and Privacy Encryption Protocol (DES or AES-128) are used to secure the authentication and data transfer. A description can be found in RFC 3410 to 3417.

## 5. Glossary

<b>AC</b>	Alternating current
<b>ACCT</b>	Alternating current current transducer
<b>ADIO</b>	Analog-digital input-output
<b>Alarm</b>	An alarm has user configurable fields like a name, priority, and it can is able to sent SNMP or email notifications when it becomes active or cleared.
<b>ALCO</b>	Alarm cutoff
<b>Alert</b>	An alert is status information about a module like a converter or rectifier. For example, "Module Fail" or "Current Limit".
<b>CAN</b>	Controller Area Network
<b>CT</b>	Current transducer
<b>CX</b>	Cordex® series; for example CXC for Cordex® System Controller
<b>CXC</b>	Cordex® controller
<b>CXC HP</b>	Cordex® CXC high performance controller
<b>CXD</b>	Cordex® DC-DC converter
<b>CXR</b>	Cordex® rectifier
<b>DC</b>	Direct current
<b>DCCT</b>	Direct current current transducer
<b>DHCP</b>	Dynamic Host Configuration Protocol
<b>DOD</b>	Depth of discharge
<b>FCC</b>	Federal Communications Commission
<b>GUI</b>	Graphical user interface
<b>Hint</b>	A hint is information about the state of the system or possible configuration problems.
<b>ICMP</b>	Internet Control Message Protocol
<b>IEC®</b>	International Electrotechnical Commission
<b>IETF</b>	Internet Engineering Task Force
<b>IP</b>	Internet Protocol
<b>IPv4</b>	Internet Protocol version 4
<b>IPv6</b>	Internet Protocol version 6
<b>ISO</b>	International Organization for Standardization
<b>LCD</b>	Liquid crystal display
<b>LED</b>	Light-emitting diode
<b>LVD</b>	Low voltage disconnect
<b>LVBD</b>	Low voltage battery disconnect

<b>MAC</b>	Media Access Control; MAC address
<b>MIB</b>	Management Information Base; a database of entities most often associated with SNMP
<b>MOV</b>	Metal oxide varistor
<b>MUX</b>	Multiplexer
<b>NEBS</b>	Network Equipment-Building System; a set of safety, spatial and environmental guidelines for telecom
<b>OLED</b>	Organic light-emitting diode; in-shelf controller display
<b>RFC</b>	Request For Comments; a formal document (or standard) from the Internet Engineering Task Force (IETF)
<b>SCI</b>	Serial Communication Interface
<b>SELV</b>	Safety extra low voltage
<b>SMTP</b>	Simple Mail Transfer Protocol
<b>SNMP</b>	Simple Network Management Protocol
<b>SNTP</b>	Simple Network Time Protocol
<b>SOC</b>	State of charge
<b>TCP/IP</b>	Transmission Control Protocol / Internet Protocol
<b>Trap</b>	An unsolicited SNMP event notification



Alpha Technologies Ltd. | 7700 Riverfront Gate, Burnaby, BC V5J 5M4 Canada  
Toll Free North America: +1 800-667-8743 | Outside North America +1 604-436-5547 | Technical Support +1 888-462-7487  
For more information visit our website at: [www.enersys.com](http://www.enersys.com)

© 2023 Alpha Technologies Ltd., an EnerSys company. All Rights Reserved. Trademarks and logos are the property of Alpha Technologies Ltd. and its affiliates. Subject to revisions without prior notice. E. & O.E.

0350099-J0 REV AA (02/2023)